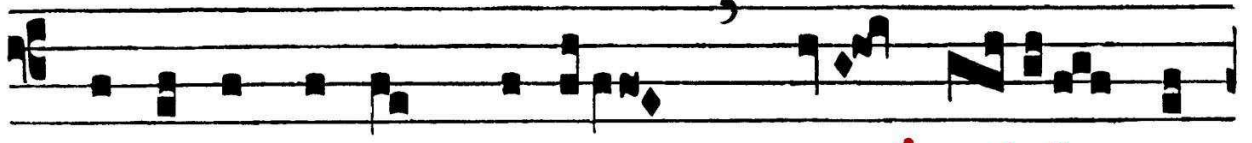




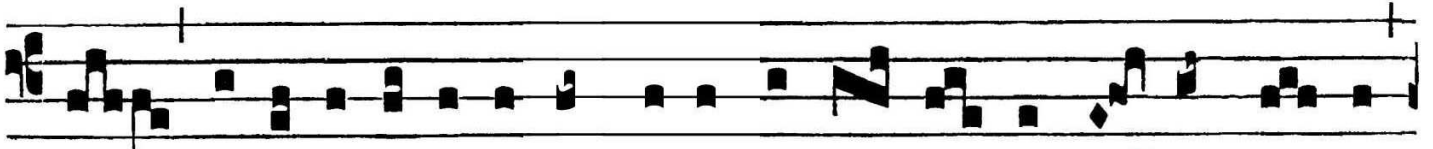
ANT. AD OFFERTORIUM

II

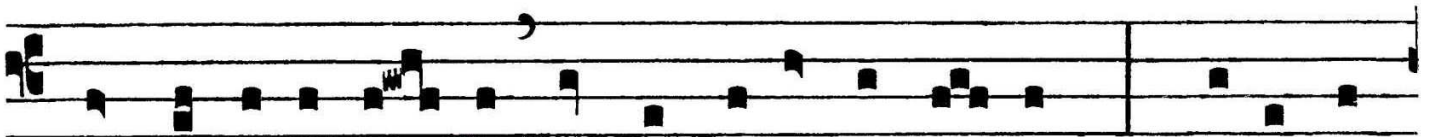


D

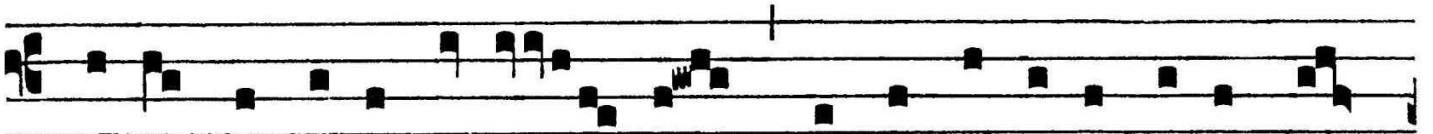
1 ✓ - - 1 - ✓ *1 ? 1 1 1 1 ✓*
Omi-ne Ie-su Christe, Rex gló- ri-



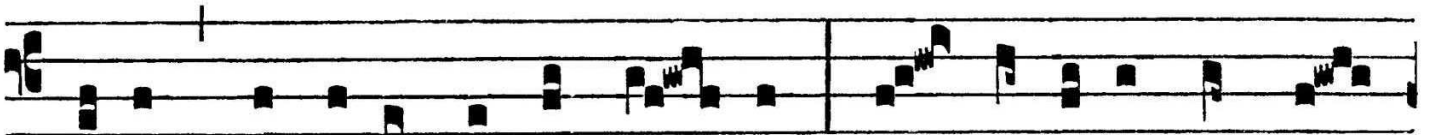
1 1 1 ✓ - ✓ - - *1 1 1 - ? 1 1 1 -*
ae, lí-be-ra á-nimas ómni-um fi-dé- li- um de-functó- rum



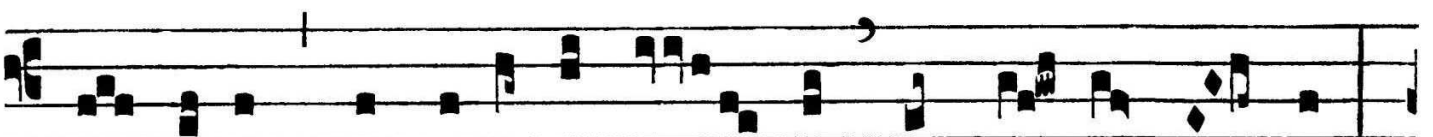
p ✓ - - cant - 1 - 1 p 1 1 - *1 - 1*
de poénis infér- ni, et de pro-fúndo la- cu : lí-be- ra



1 1 - 1 - 1 1 1 - cant - 1 1 1 - 1 - 1
e- as de o-re le- ó- nis, ne absórbe- at e- as tár-



1 - - - p 1 ✓ cant - cant p ✓ - p cant
ta-rus, ne cadant in obscú- rum: sed sígni-fer sanctus



1 ✓ - - - p ✓ 1 1 - ✓ 1 1 1 p ? -
Mí-cha-el repraeséntet e- as in lu- cem san-ctam :



* Quam o-lim Abrahæ promi- sísti, et sé-

mi- ni e- ius. ∇ . Hósti- as et pre-ces ti-bi Dómi- ne

laudis of-fé- rimus : tu súsci-pe pro a-nimábus il- lis,

qua- rum hó-di- e memó- ri- am fá-ci- mus : fac e- as, Dómi-

ne, de mor- te transí- re ad vi- tam. * Quam o-lim.