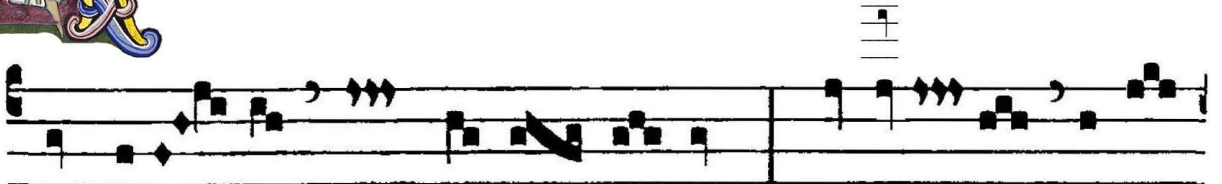




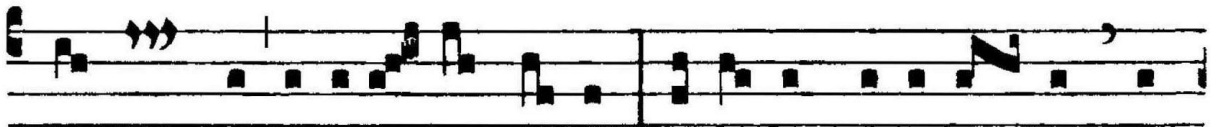
# ANTIPHONA AD INTROITUM



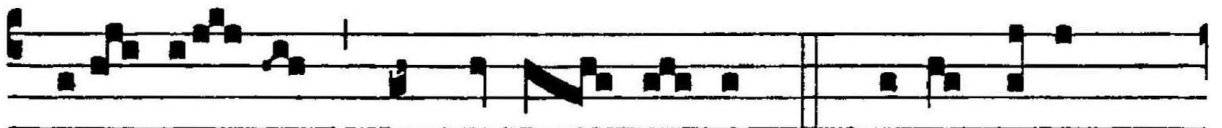
D te levá-vi á-nimam me-am : De-us me-us in



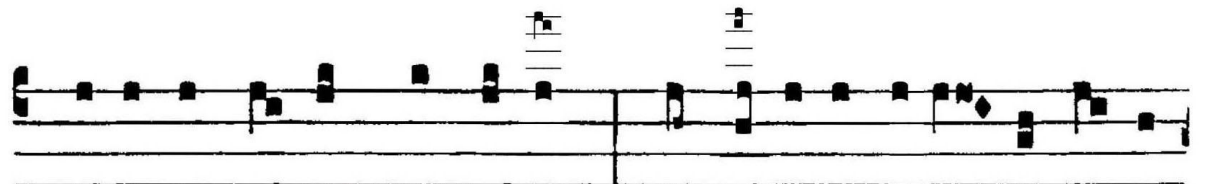
te confí-do, non e-ru-bé-scám : neque irrí-



de-ant me in-imí-ci me-i : ét-e-nim u-ni-vér-si qui



te expé-ctant, non confun-dén-tur. *Ps.* Vi-as tu-as,



Dómi-ne, de-mónstra mi-hi : et sémi-tas tu-as e-do-ce



me. Gló-ri- a Patri. saecu- ló-rum. Amen.

