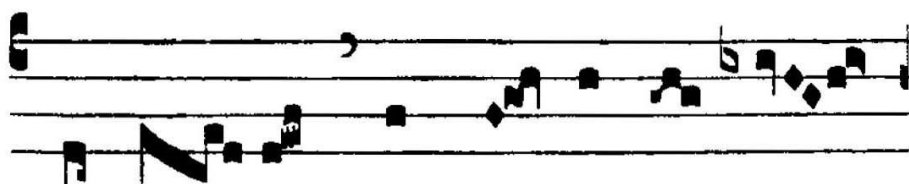
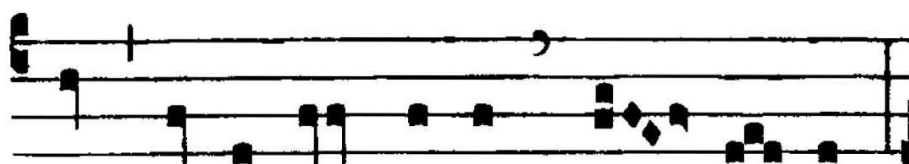




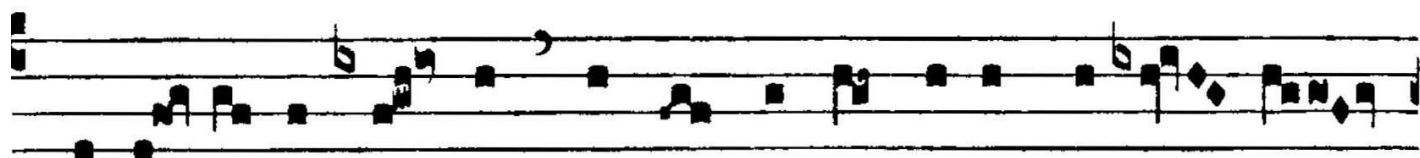
ANTIPHONA AD INTROITUM



p m
Au-dé- te in DÓ- mi- no sem-



f p
per : í- te- rum di- co, gau- dé- te :



f p
mo- dé- sti- a ve- stra no- ta sit ómni- bus ho- mí- ni-



f p
bus : Dómi- nus pro- pe est. Ni- hil sol- lí- ci- ti



f p
si- tis : sed in o- mni o- ra- ti- ó- ne pe- ti- ti- ó-



nes ve-strae inno-té-scant a- pud De- um. *Ps.* Be-ne-di-

xísti, Dómi-ne, terram tu- am : a-ver-tísti capti-vi- tá-

tem Ia- cob. Gló-ri- a Patri. E u o u a e.