



# ANTIPHONA AD INTROITUM



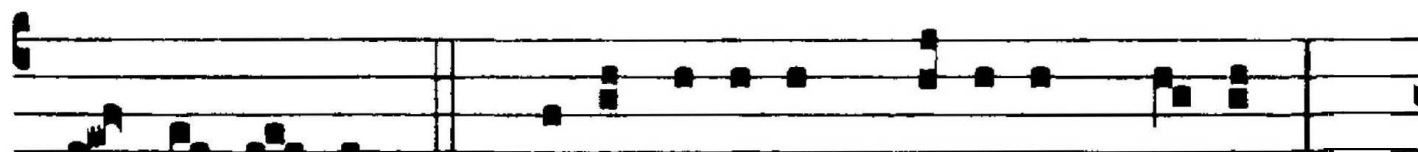
IN. I



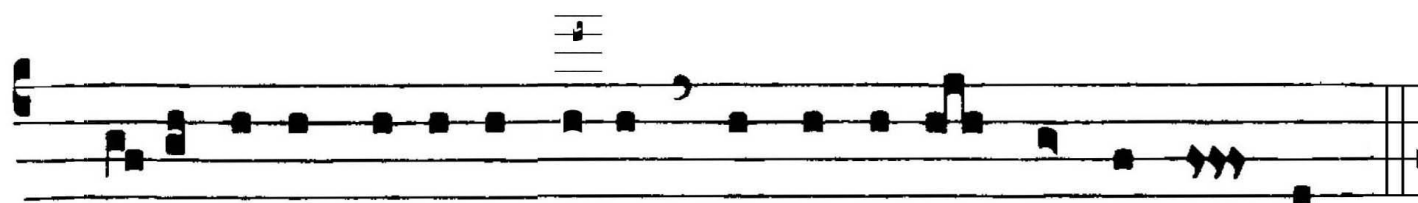
O-rá-te cae- li dé- su- per, et nu- bes plu-



ant iu- stum : ape-ri- á- tur ter- ra, et gérmí- net



Sal-va- tó- rem. *Ps.* Cæ- li enárrant gló-ri- am De- i :



et ó-pe- ra mánu- um e- ius adnúnti- at firmamén- tum.



Gló-ri- a Pa- tri. E u o u a e.