



ALLELUIA RESTITUTUS

III tr.

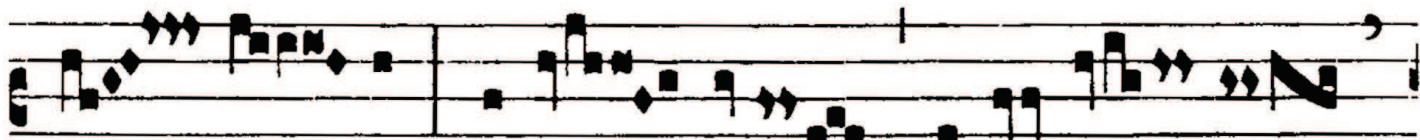


A

L- le- lú- ia.



V. Ve- ni, Dó- mi- ne, et no- li



tar- dá- re : re- lá- xa fa- cí- no-



ra ple- bis tu- ae.



ra ple- bis tu- ae.



Handwritten musical notation on a five-line staff. The notation includes a treble clef, a key signature of one flat (B-flat), and a series of notes and rests. A double bar line is present. Below the staff, there are handwritten notes in red ink: "1/2", "3/4", "A5", and "A4".