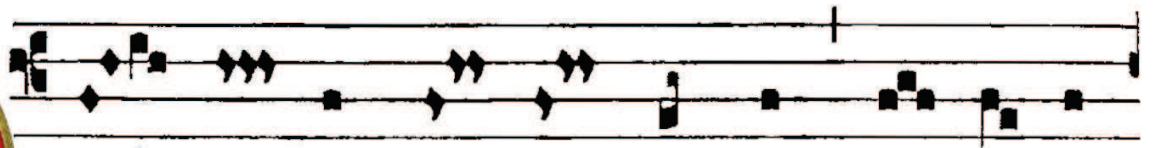
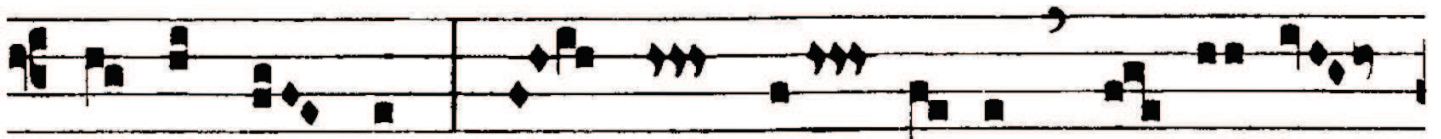




ANTIPHONA AD INTROITUM



O- MI- NUS dí- xit ad me : Fí- li- us



me- us es tu, e- go hó- di- e gé- nu- i



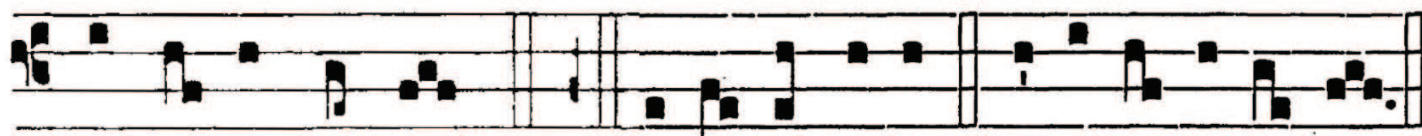
te. *Ps.* Qua-re fremu- é-runt gentes : et pópu-li me-di-tá-



ti sunt in-á-ni- a? *Ant.* Póstu- la a me, et dabo ti-



bi gentes he-re-di- tá-tem tu- am, et possessi- ó-nem tu- am



r n / p s

térmi-nos ter-ræ. *Ant.* Gló-ri- a Patri. E u o u a e.