



ANTIPHONA AD INTROITUM

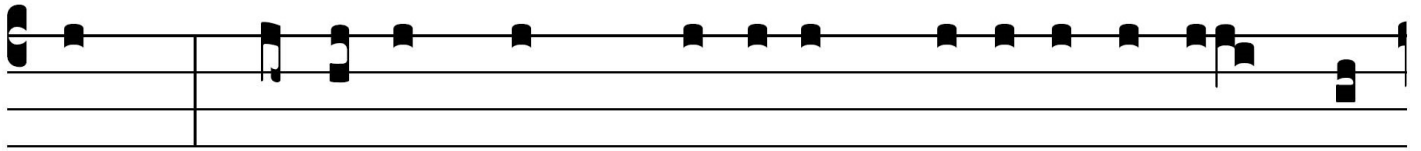
L ^{Intr. 8.} UX fulgē- bit * hó- di- e su- per nos:

qui- a na- tus est no- bis Dó- mi- nus: et vo- cá- bi-

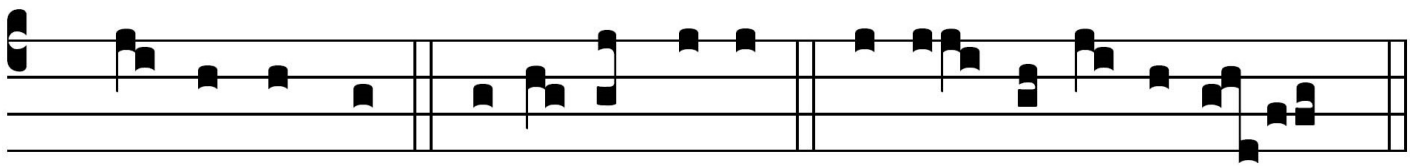
tur Admi- rá- bi- lis, De- us, Princeps pa- cis, Pa- ter

fu- tú- ri saé- cu- li: cu- jus re- gni non e- rit

fi- nis. *Ps.* Dómi- nus regná- vit, de- có- rem indú- tus



est: * indú-tus est Dóminus forti-tú-di-nem, et



prae-cínxit se. Gló-ri- a Patri. E u o u a e.