



ANTIPHONA AD INTROITUM

I N nómi-ne Je-su omne genu fle-ctá-tur,

cae-lésti-um, ter-rés-tri-um et infer-nó-rum:

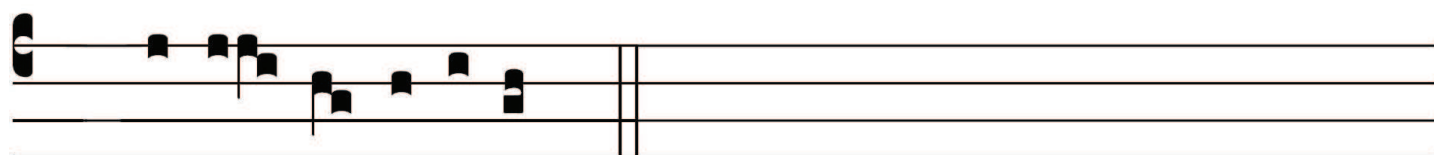
et omnis lingua confi-te-á-tur, qui-a Dóminus Je-sus

Chri-stus in gló-ri-a est De-i Pa-tris.

Ps. Dómi-ne Dóminus noster: * quam admi-rá-bi-le



est nomen tu-um in uni- vέρsa terra. Gló-ri-a Patri



E u o u a e.