



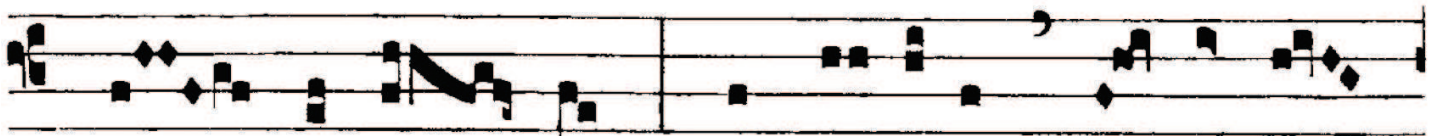
ANTIPHONA AD INTROITUM



C- CE advé- nit domi- ná- tor



Dó- mi- nus : et regnum in



ma- nu e- ius, et pot- éstas, et impé-



ri- um. *Ps.* De- us, iu- dí- ci- um tu- um re- gi da: et iu-



stí- ti- am tu- am fí- li- o re- gis. Gló- ri- a Pa- tri. E u o u a e.