



GRADUALE

GR. V

O



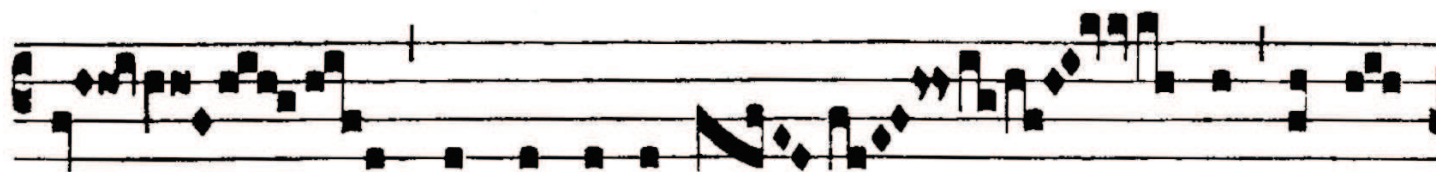
mnes de Sa- ba vé-



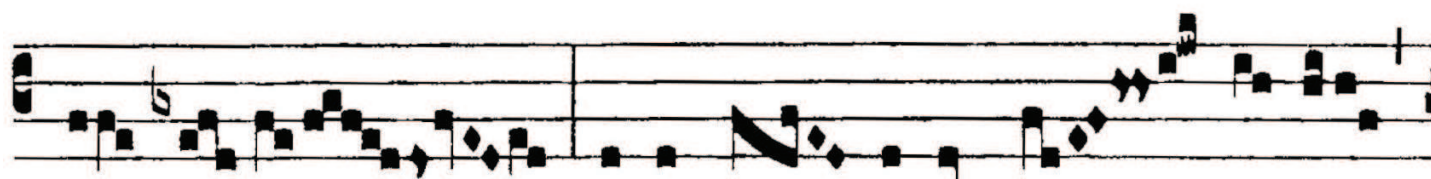
ni- ent, au- rum et thus de-fe-réntes, et laudem Dómi-no



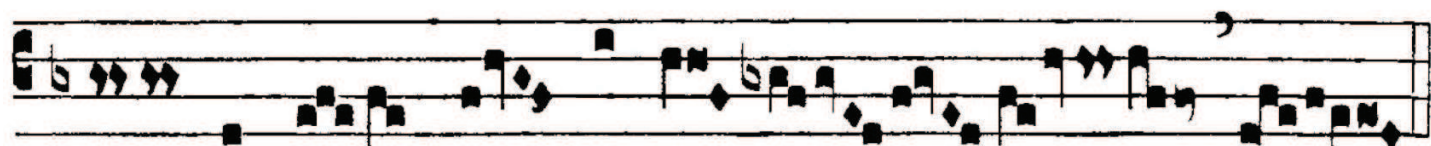
annun- ti- ántes. ∇ . Surge,



et il-lumi-ná- re Ie-rú-



Handwritten musical notation in red ink above the lyrics.
sa- lem : qui- a gló- ri- a Dó- mi- ni



Handwritten musical notation in red ink above the lyrics.
su- per te or- ta est.