



ANTIPHONA AD INTROITUM



- mnis ter-ra adó- ret te, De- us,



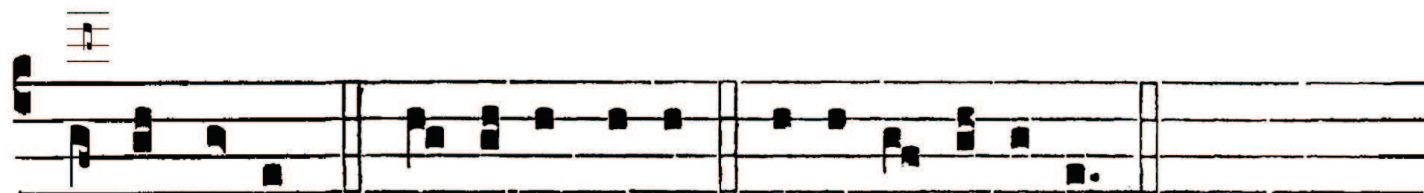
et psal-lat ti- bi : psal- mum di- cat nó- mi- ni



tu- o, Al- tís-si- me. *Ps.* Iu- bi- lá- te De- o omnis



terra, psalmum dí- ci- te nómi- ni e- ius : da- te gló- ri- am



laudi e- ius. Gló- ri- a Patri. E u o u a e.