



ANT. AD COMMUNIONEM

CO. VI

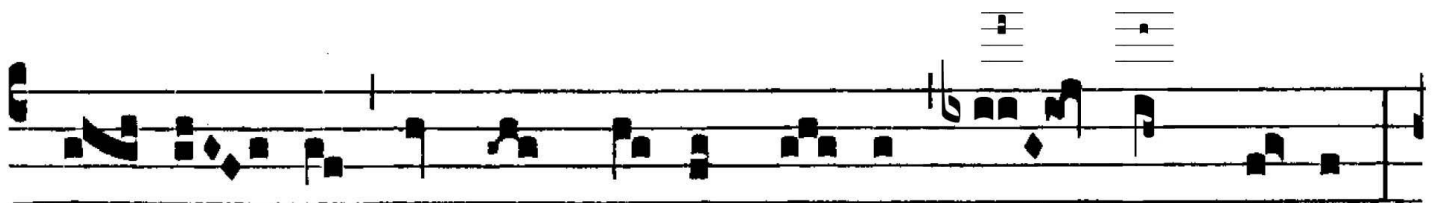


D

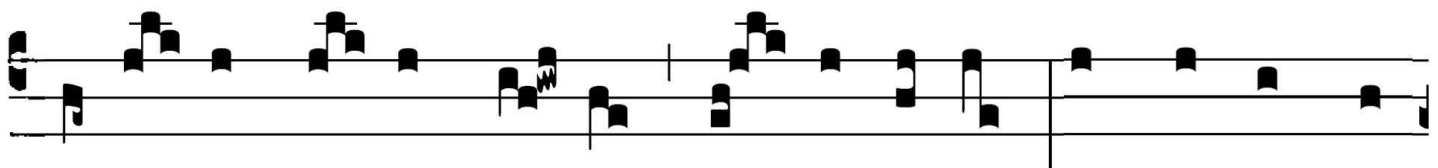
I-cit Dó- mi- nus : Implé-te hýdri- as a-



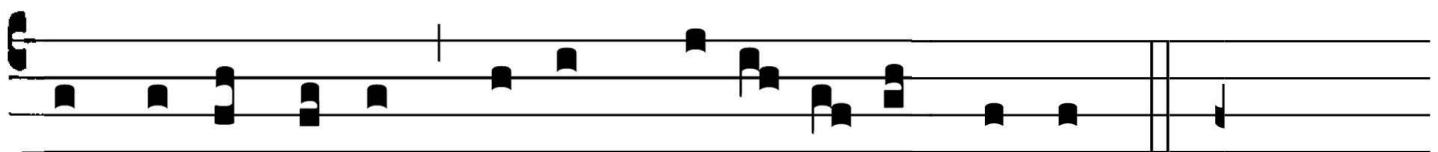
qua et ferte architri-clí- no. Cum gu- stás- set archi-



tri- clí- nus aquam vi- num fa- ctam, di- cit sponso :



Servá-sti vi- num bo- num us- que adhuc. Hoc signum fe-



cit Ie- sus primum co- ram discí- pu- lis su- is.