



# ANTIPHONA AD INTROITUM

IN. I



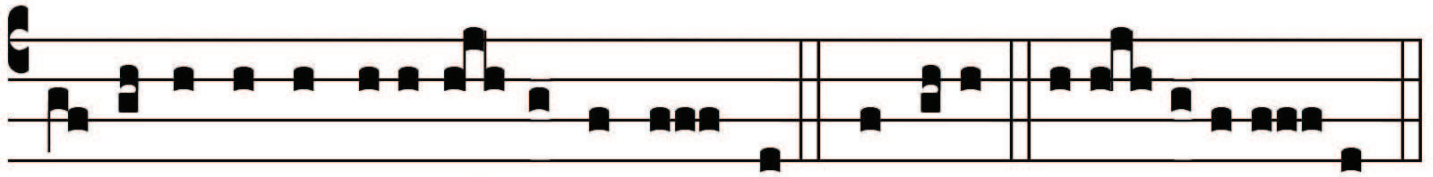
Xsúr-ge, \* qua-re obdórmis Dómi-ne? exsúr-

ge, et ne repéllas in fí-nem : qua-re fá-ci-em tú-am

avértis, obli-ví-sceris tribu-la-ti-ó-nem nós-tram? Adhaé-

sit in tér-ra vénter nó-ster : ex-súrge, Dómi-ne, ádju-va

nos, et lí-be-ra nos. Ps. Dé-us, áuribus nostris audí-vimus :



*A V / / / / / S / -*

pátres nóstri annunti- a- vérunt nó- bis. Gló-ri-a E u o u a e