



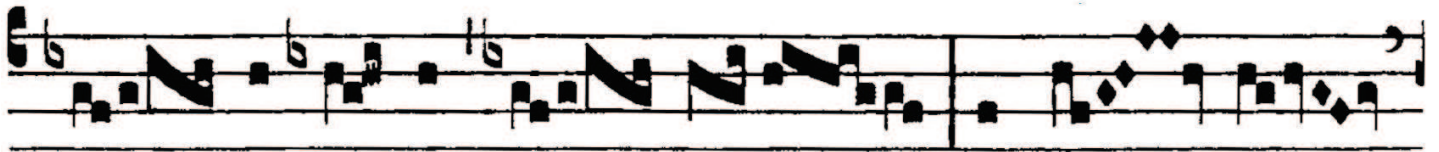
# GRADUALE

GR. I

S



Ci- ant gen- tes quó-ni- am



no- men ti- bi De- us : tu so- lus



Al- tís-simus super o- mnem ter-



ram. *cum* De- us me- us, po-ne il-



los ut ro- tam, et sic-



*Handwritten musical notation in red ink above the lyrics.*  
ut stí- pu- lam an- te fá-



*Handwritten musical notation in red ink above the lyrics.*  
ci- em ven- ti.