



TRACTUS

TR. VIII

J

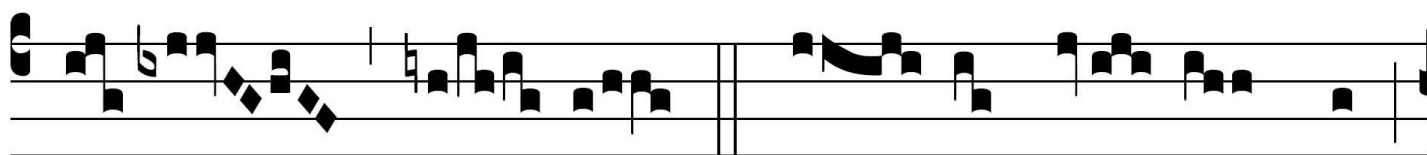
Ubi-lá- te * Dó-mi-no omnis ter-

ra: serví- te Dómi-no in lae-

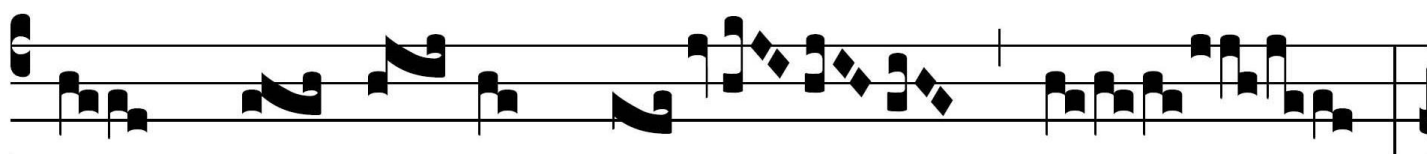
tí- ti- a. ∇ . Intrá- te in conspéc- tu

e- jus, in exsul- ta- ti- ó- ne. ∇ .

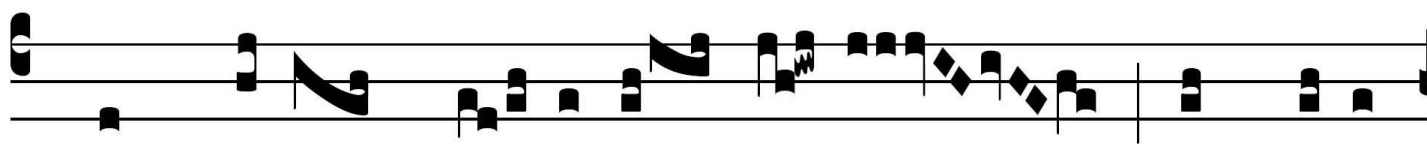
Sci-tó-te quod Dómi-nus ip- se est De-



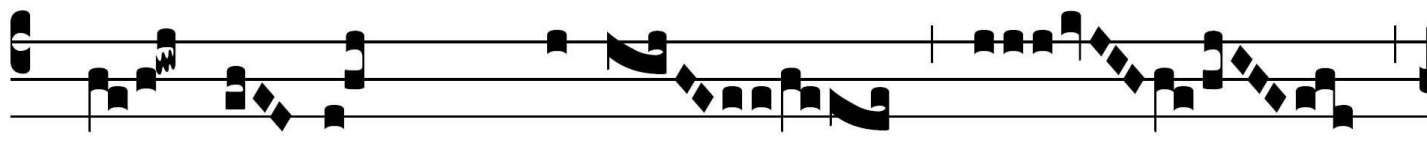
us. Ip- se fe- cit nos,



et non ip- si nos:



nos autem pó- pu- lus e- jus, et oves



pá- scu- ae * e- jus.

