



ANTIPHONA AD INTROITUM

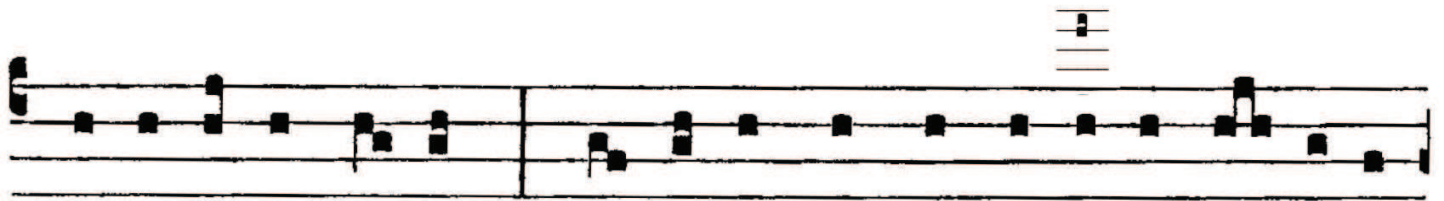
M I-se-ré-ris óm-ni-um, Dó-mi-ne, et ni-hil

o-dísti e-ó-rum quae fe-cí-sti, dissímu-lans pec-

cá-ta hó-mi-num propter pae-ni-ténti-am, et

par-cens il-lis : qui-a tu es Dó-

mi-nus De-us no-ster. *Ps.* Mi-se-ré-re me-i De-us,



mi-se-ré-re me- i : quó-ni-am in te confĩ-dit á-nima



me- ^{'''}a. Gló-ri-a Patri. E u o u a e.