



ANTIPHONA AD INTROITUM

IN. IV

R Emi- nisce-re mi- se-ra-ti- ó- num tu- á-

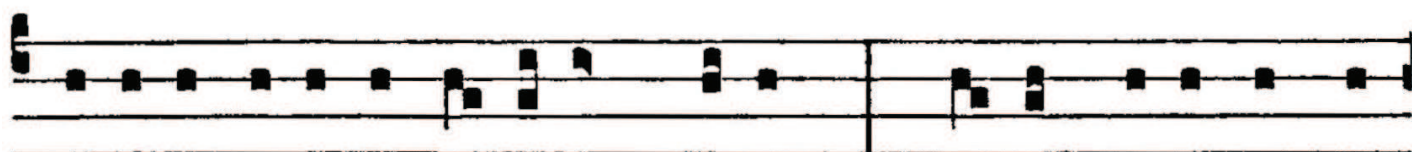
rum, Dómi- ne, et mi- se-ri-cór-di-ae tu- ae, quae

a saéc-u- lo sunt : ne unquam domi- néntur no- bis in-

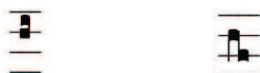
imí- ci no- stri : lí- be- ra nos De- us Is- ra- el ex

ómni- bus angú- stiis no- stris. *Ps.* Ad te

The musical notation is written on a grand staff with two systems of five-line staves. The vocal line is on the upper staff, and the piano accompaniment is on the lower staff. The notation includes various note values, rests, and dynamic markings. The lyrics are printed below the vocal line, with red musical symbols above them indicating phrasing and articulation.



Dómi-ne levá-vi á-nimam me-am: De-us me-us in te



confí-do, non e-rubéscam. E u o u a e.