



ANTIPHONA AD INTROITUM

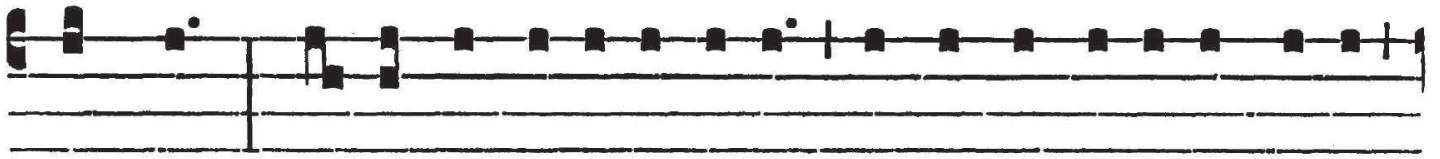
D O-mi-ne, * ne longe fá-ci-as auxí-li-um

tu-um a me, ad de-fensi-ó-nem me-am

áspi-ce : lí-be-ra me de o-re le-ó-

nis, et a córni-bus u-ni-cornu-ó-rum hu-mi-li-

tá-tem me-am. *Ps.* De-us, De-us me-us, ré-spi-ce



in me, * qua-re me de-re-liquísti? longe a sa-lú te me- a



verba de-lictó- rum me- ó- rum.