



# ANTIPHONA AD INTROITUM



E-SURRE-XI, et adhuc te-

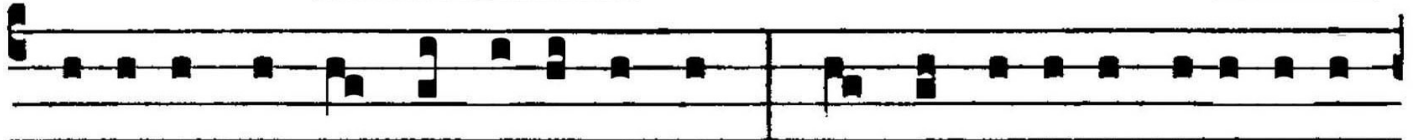
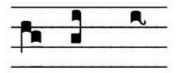
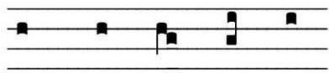
cum sum, al- le- lú- ia :

po- su- í- sti su- per me ma- num tu- am, al- le-

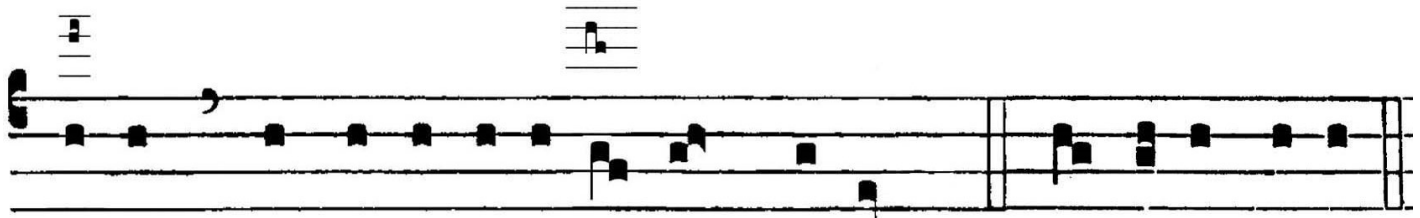
lú- ia : mi- rá- bi- lis fa- cta est sci- én- ti- a



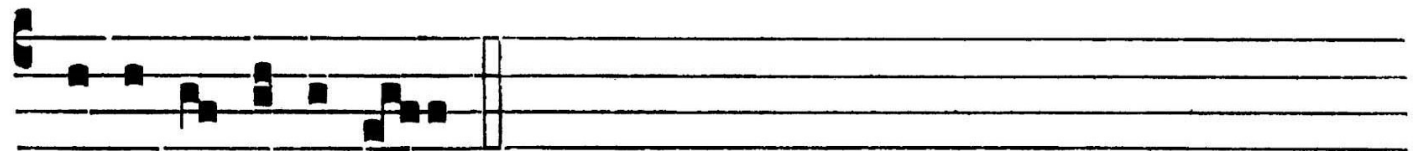
*AA - p - J p - N /,,, S S, A A J /*  
 tu- a, alle- lú-ia, al- le- lú- ia. *Ps.* Dó-mi-ne



*/ / / / / / A J / - A J / / / / A J P*  
 probásti me, et cognoví-sti me : tu cognoví-sti sessi- ó-nem



*J - - - - A P / N*  
 me- am, et re-surrecti- ó-nem me- am. Gló- ri- a Patri.



E u o u a e.