



ANTIPHONA AD INTROITUM



Ubi-lá- te De- o omnis terra, alle-lú- ia : psal-



mum dí- ci- te nó- mi- ni e- ius, alle- lú- ia :



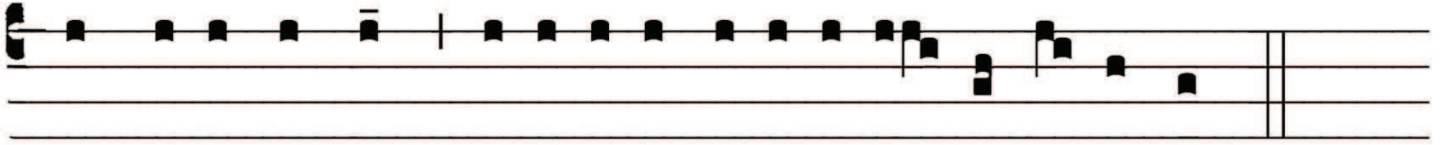
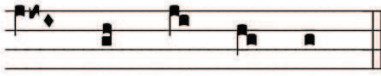
da- te gló- ri- am laudi e- ius, alle- lú- ia,



alle- lú- ia, al- le- lú- ia. *Ps.* Dí- ci- te De- o, quam

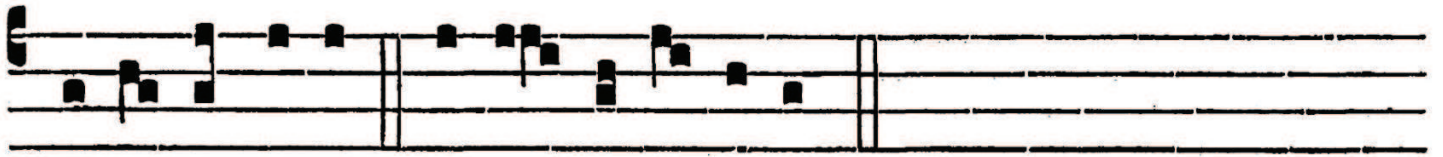


terri- bí- li- a sunt ó- pe- ra tu- a, Dómi- ne! in multi- tú- di- ne



♩ ♪ ♪ ♪ -

vir- tú- tis tu- ae menti- éntur ti- bi in- i- mi- ci tu- i.



Gló- ri- a Pa- tri. E u o u a e.