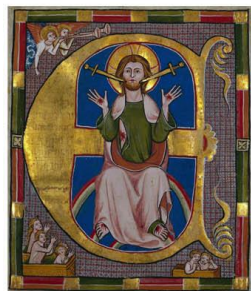




# ANTIPHONA AD INTROITUM



X- áudi, Dó- mi-ne, vo-cem me- am, qua cla-

mávi ad te, al-le- lú- ia : ti-bi di-xit cor me- um,

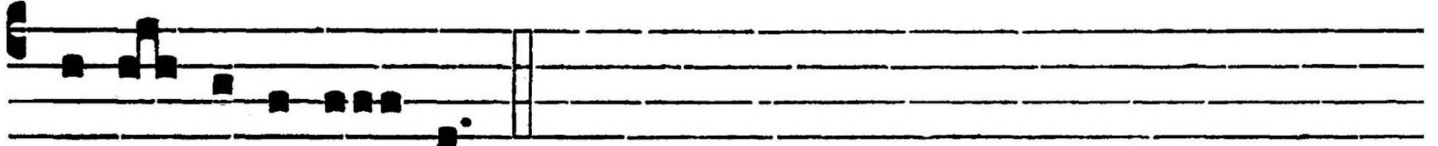
quae-sí-vi vul- tum tu- um, vultum tu- um Dómi-ne

requí-ram : ne a-vértas fá-ci-em tu-am a me, alle-

lú- ia, alle- lú- ia. *Ps.* Dómi-nus il-lumi-ná-ti- o



*A* *V* *P* *V* / / *A* *P* - " -  
me- a, et sa-lus me- a : quem timé- bo? Gló-ri- a Patri.



E u o u a e.