

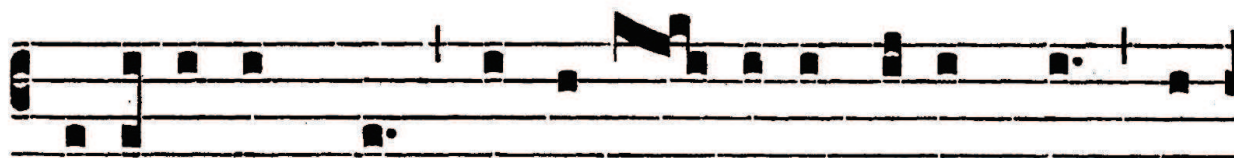


ANT. AD COMMUNIONEM

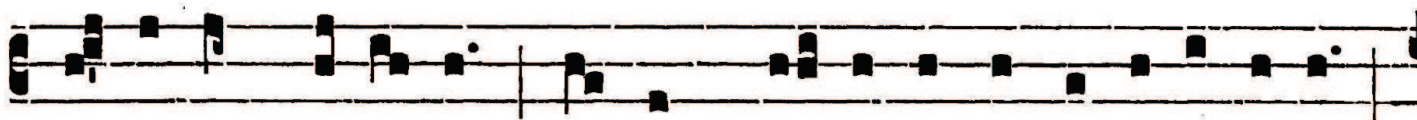
Co

7.

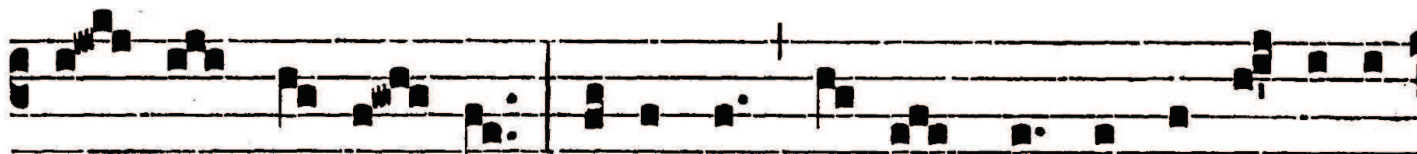
Q



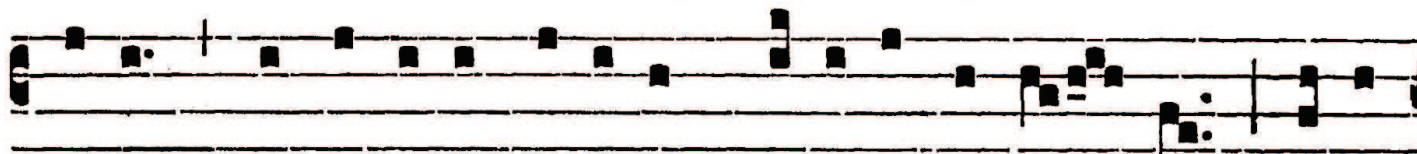
- ✓ / / - / - M - - ✓ - - -
Uo-ti-escúmque * mandu-cá- bi-tis panem hunc, et



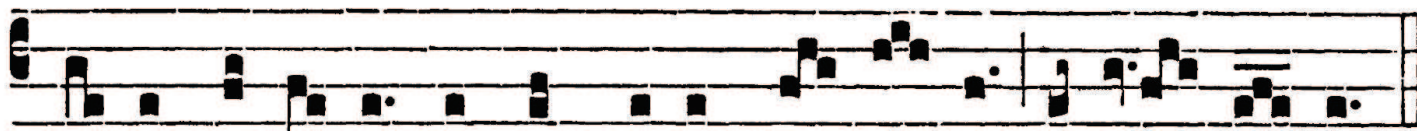
✓ / / P ✓ A - A - ✓ / / / - / / - -
cá- li-cem bi-bé- tis, mor-tem DÓ- mi- ni annunti- á- bi- tis,



✓ A - ✓ A ✓ - - A ✓ - - ✓ / ✓ - -
do- nec vé- ni- at : í- taque qui- cúmque mandu- cá- ve- rit



/ - - / - - / - - ✓ - / - A ✓ A ✓ /
panem, vel bí- be- rit cá- li- cem Dómi- ni indí- gne re- us



A - ✓ A - - ✓ - - ✓ ✓ - ✓ / ✓ ✓ /
e- rit córpo- ris et sán- gui- nis Dó- mi- ni, alle- lú- ia.