



GRADUALE

GR. V



B

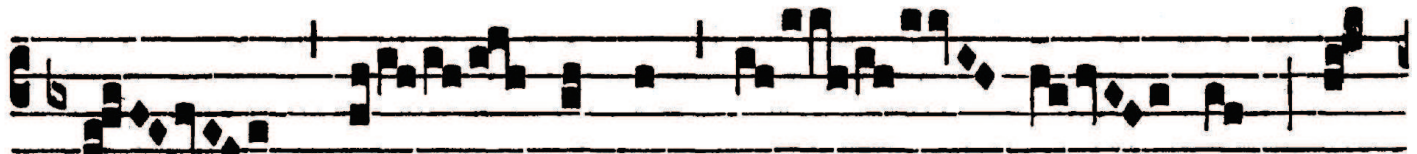
Ene-dí-ctus es, Dó-mi-ne,



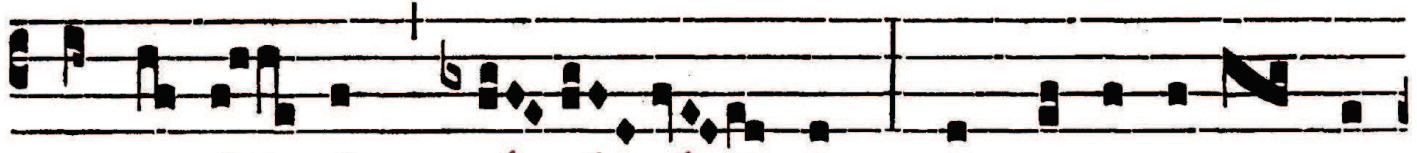
qui in-tu-é-ris a-býs-sos, et



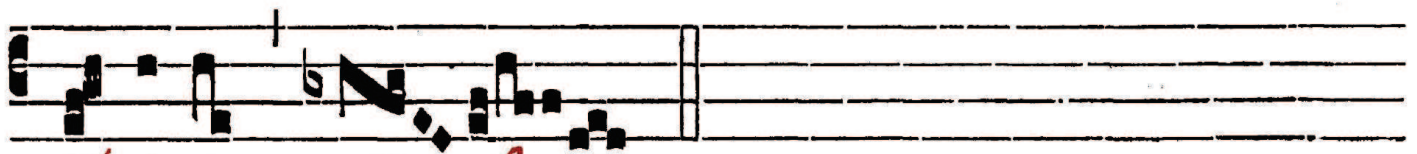
se-des su-per Ché-ru-bim. *V.* Be-ne-dí-



ctus es Dó-mi-ne, in



firmamén-to cae-li, et laudá-bi-lis in



saé-cu-la.

