



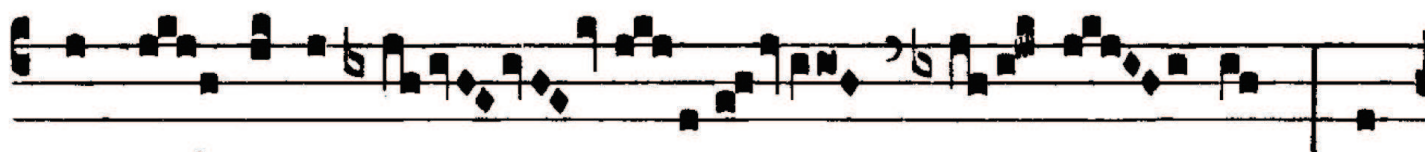
GRADUALE RESTITUTUM

GR. V

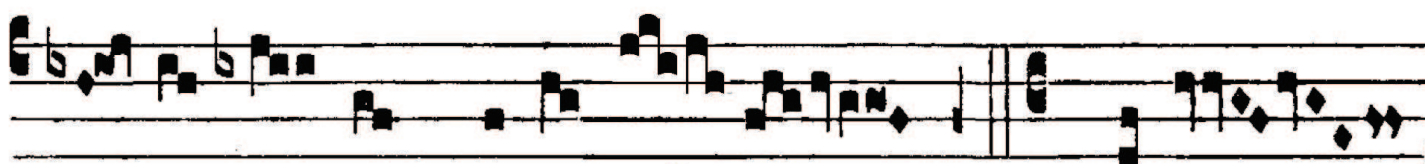


B

Ene-dí-ctus es, Dó-mi-ne,



qui in-tu-é-ris a-býs-sos, et



se-des su-per Ché-ru-bim. *∇*. Be-ne-



díctus es in thro-no



reg-ni tu-i, et laudá-bi-lis in saé-



cu-la. - ē Π / . / . / . Π / " Π 3 Π / . / .

NB. Texte du verset différent de la vaticane, d'après Einsiedeln 121.