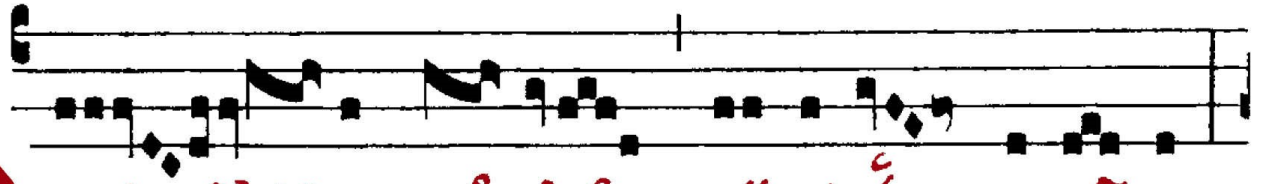


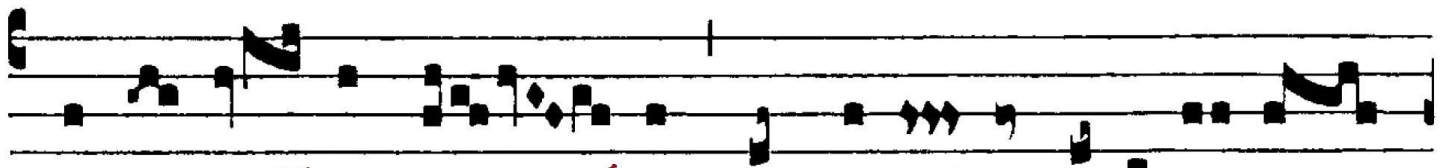


ANTIPHONA AD INTROITUM

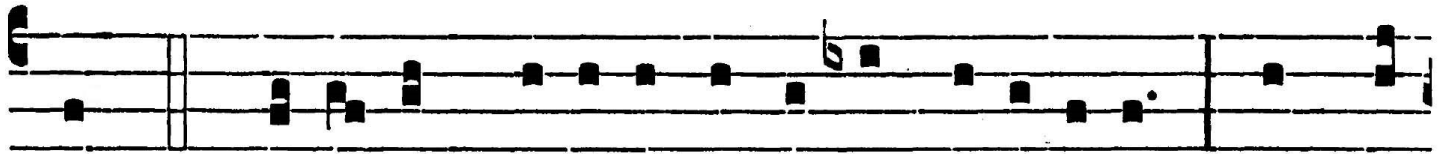
IN. VI



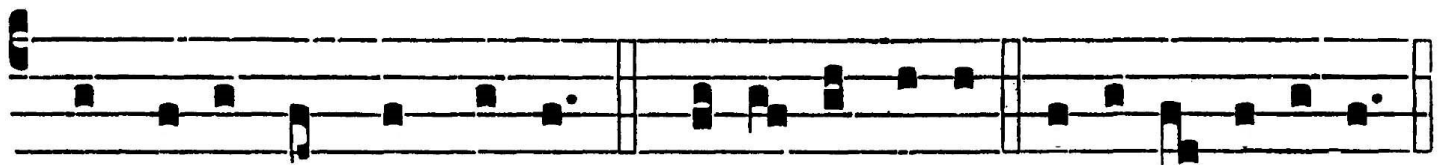
mnes gen-tes pláu-di-te má-ni-bus :



iu-bi-lá-te De-o in vo-ce exsulta-ti-ó-



nis. *Ps.* Quó-ni-am Dómi-nus excél-sus, terrí-bi-lis : * Rex ma-



gnus super omnem terram. Gló-ri-a Patri. E u o u a e.