


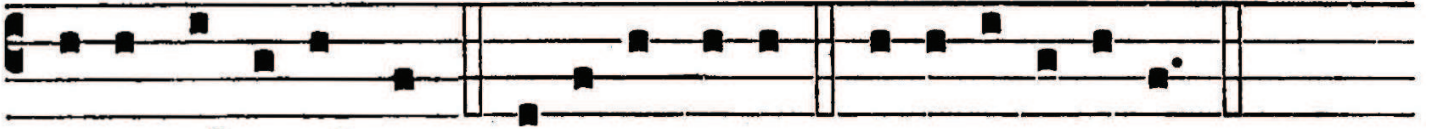


ANTIPHONA AD INTROITUM

IN. V



Cce De- us ádiu-vat me, et DÓ-mi-nus
 sus-cép-tor est á-nimae me- ae : avérte ma- la
 in-i- mí- cis me- is, in ve- ri-tá-te tu- a dispérde
 il-los, pro-té-ctor me- us Dómi- ne.
Ps. De- us in nó-mi-ne tu-o salvum me fac: et in virtú-te



tu- a iú-di-ca me. Gló-ri- a Patri. E u o u a e.