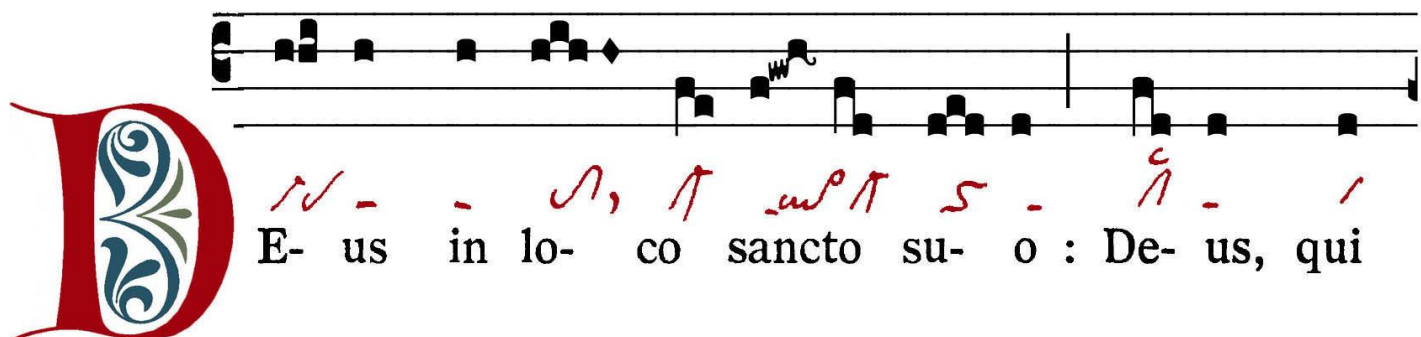
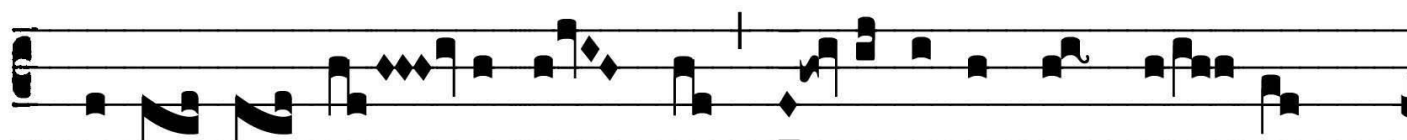





# ANTIPHONA AD INTROITUM




**D** E- us in lo- co sancto su- o : De- us, qui



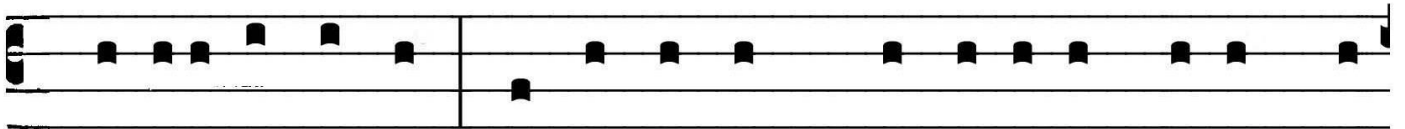
inha- bi- tá- re fa- cit un- á- nimes in do- mo :



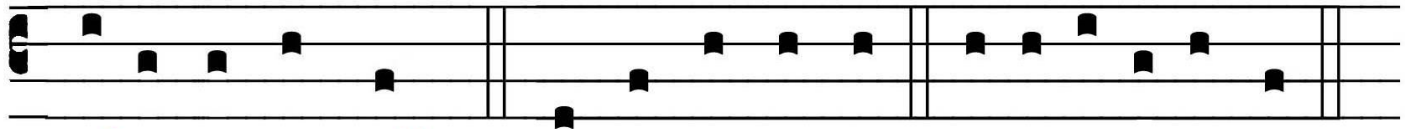
ipse da- bit vir- tú- tem et forti- tú- di- nem



ple- bi su- ae. *Ps.* Exsúrgat De- us, et dissi- péntur



*/ / ✓ / p ✓ p ✓ / / / / / ✓ - -*  
 in-imí-ci e-ius: et fú-gi-ant, qui odé-runt e-um, a



*✓ / - ~ ~ ~ ^*  
 fá-ci- e e- ius. Gló-ri- a Patri. E u o u a e.