



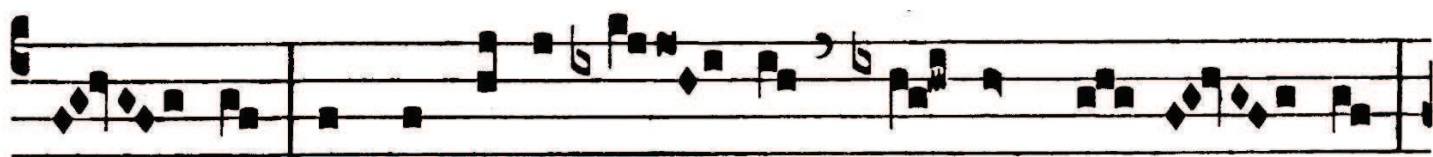
# ANT. AD COMMUNIONEM

CO. VI

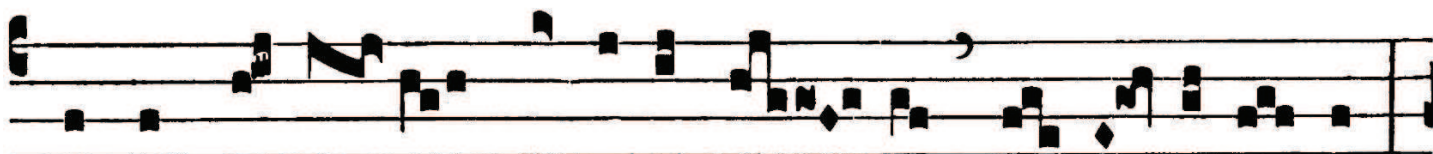


**H**

*Handwritten musical notation in red ink above the text.*  
Onó- ra Dó- mi-num de tu- a sub- stán-



*Handwritten musical notation in red ink above the text.*  
ti- a, et de primí- ti- is fru- gum tu- á- rum:



*Handwritten musical notation in red ink above the text.*  
ut imple- án-tur hórre- a tu- a sa- tu- ri-tá- te,



*Handwritten musical notation in red ink above the text.*  
et vi- no torcu- lá- ri- a red- un- dá- bunt.