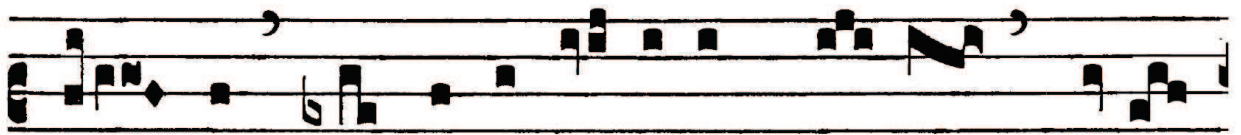




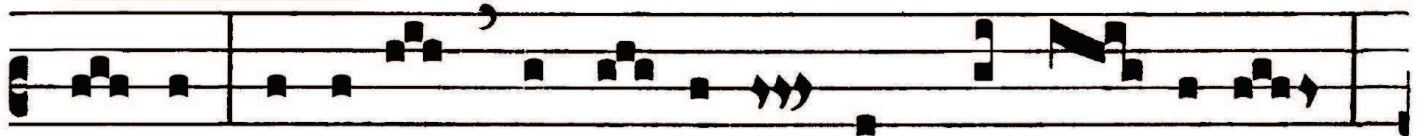
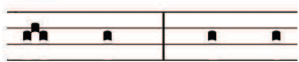
ANTIPHONA AD INTROITUM

VII.

D



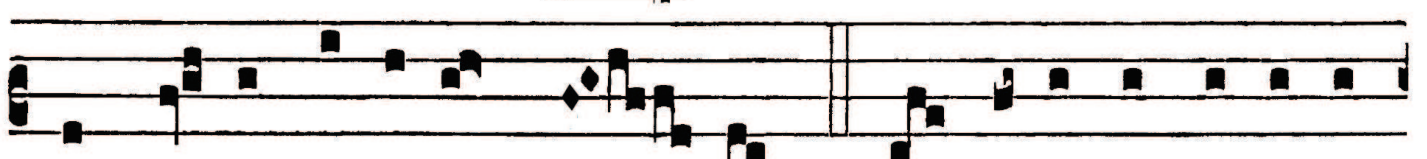
E- us in adiu-tó- ri- um me- um in-



tén-de : Dómi-ne ad ad-iuván- dum me fe- stí-na :



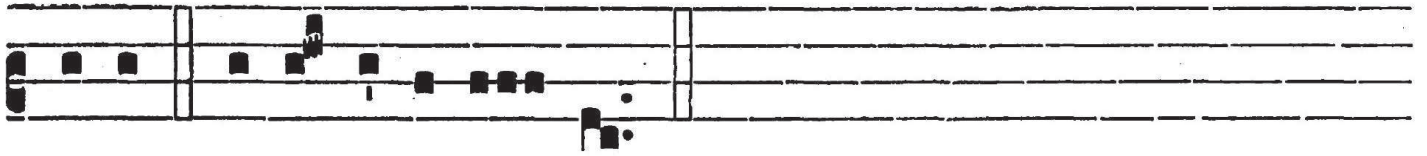
confundántur et reve-re- án-tur in-imí-ci me- i,



qui quae-runt á-nimam me- am. *Ps.* A-vertántur retrórsum



et e-rubé-scant, qui vo-lunt mi-hi ma- la. Gló- ri- a



Patri. E u o u a e.