



ANTIPHONA AD INTROITUM

IN. I

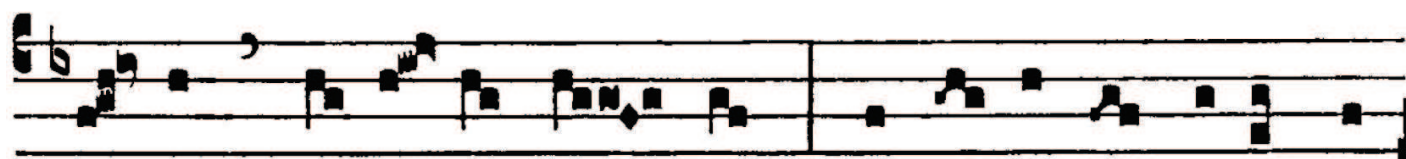


I

N-clí-na, Dó-mi-ne, aurem tu-am ad me,



et ex-áudi me: sal-vum fac servum tuum, De-us



me-us, spe-rán-tem in te: mi-se-ré-re mi-hi, Dó-



mi-ne, quó-ni-am ad te clamá-vi to-ta



di-e. *Ps.* Lae-tí-fi-ca á-nimam servi tu-i: quó-ni-am

