



# GRADUALE

GR. V

**B**

O-num est

confi-té-

ri DÓ-mi-

no :

et psál-le-re

nó-mi-ni tu-

o,

Al-tís-

si-me.

∇. Ad

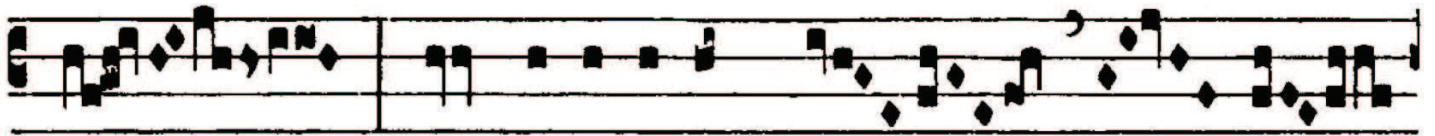
annūnti-án-

dum ma-ne

mi-se-ri-cór-

di-am

tu-



*Musical notation*  
am, et ve-ri-tá-tem tu- am



*Musical notation*  
per no- ctem.