



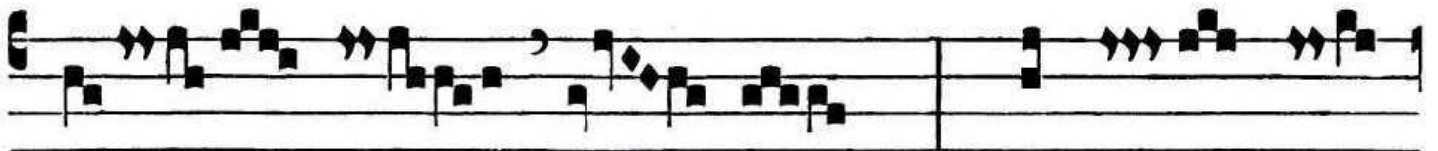
ANT. AD OFFERTORIUM

VIII

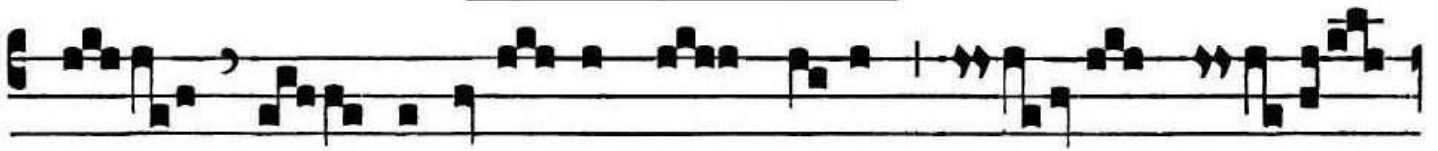
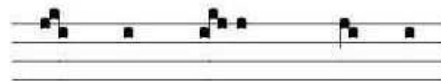


D

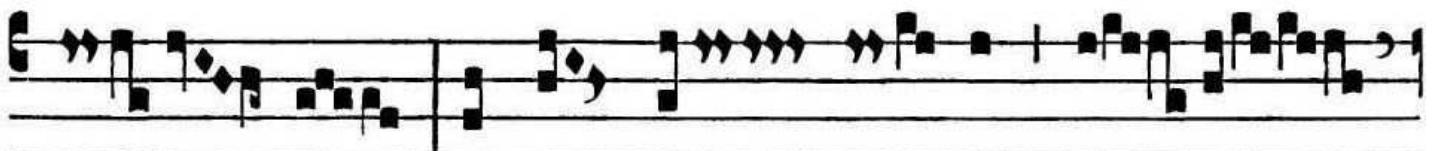
Iffú- sa est grá- ti- a in



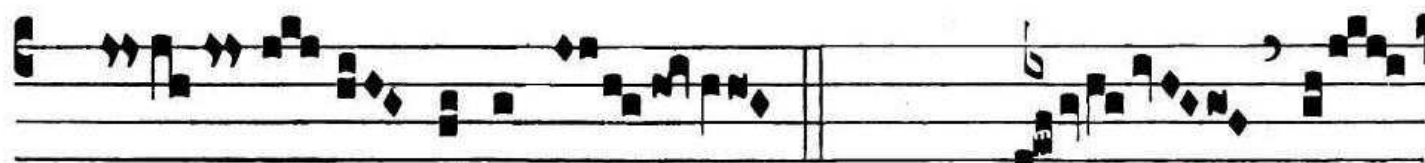
lá- bi- is tu- is : proptér- e-



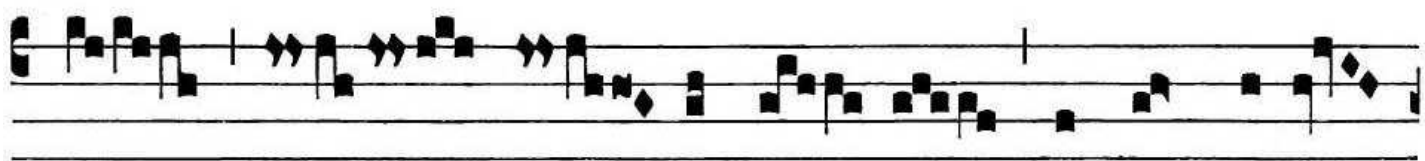
a be- ne-dí- xit te De- us in ae-



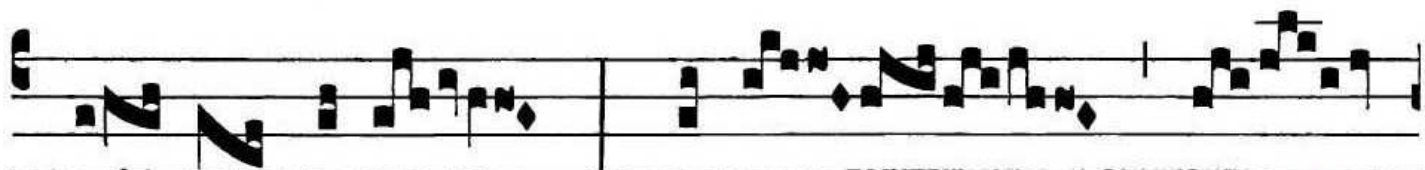
tér- num, * et in saé- cu- lum saé-



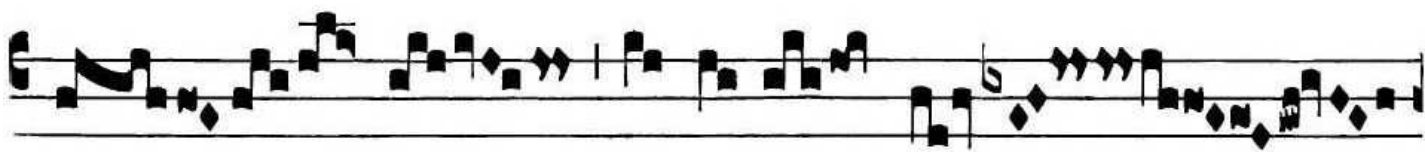
cu-li. *V. 1. Spé-*



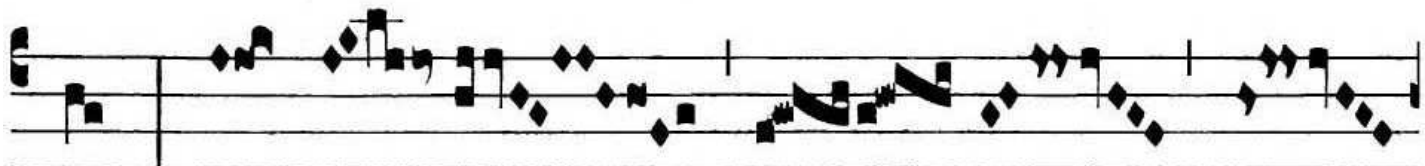
ci- e tu- a et pulchri-tú-



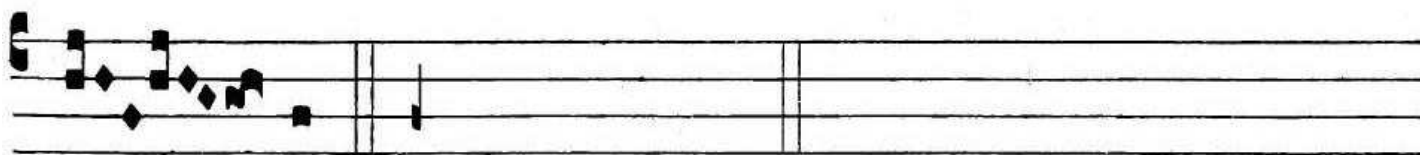
di- ne tu- a intén-



de próspe-re pro- cé-



de et re-



J. V. 4 -

gna. * Et in saeculum.