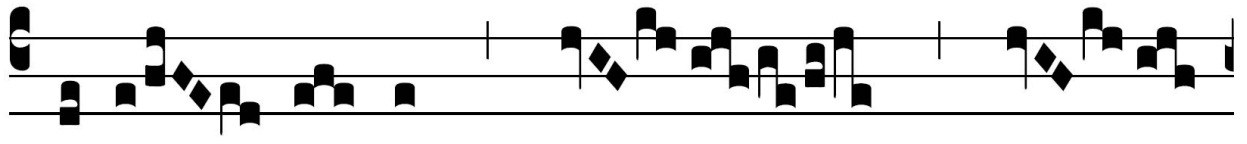




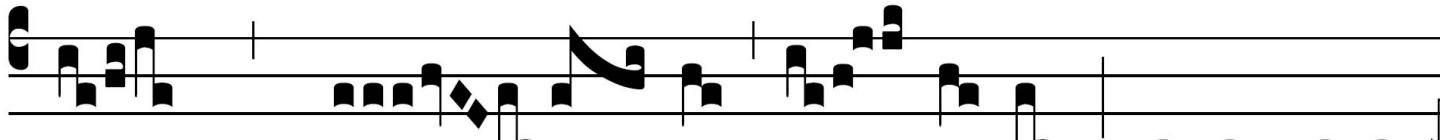
# ANT. AD OFFERTORIUM

Offert.  
8.

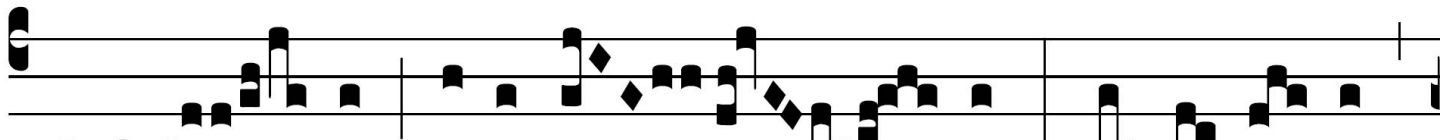
B



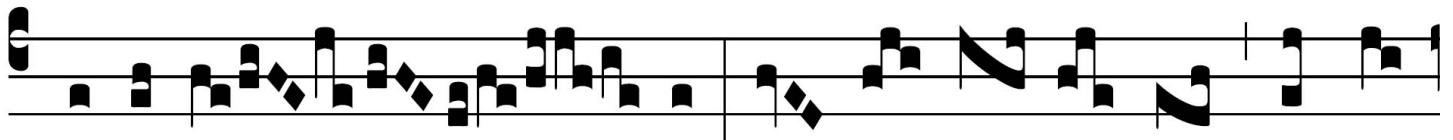
E-Á- TA es, \* Vir-



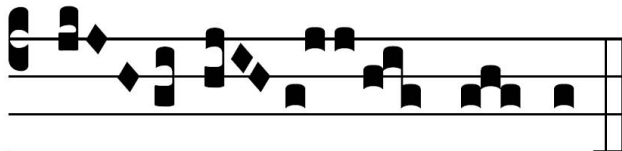
go Ma- rí- a, quae ómni- um



portá- sti Cre- a- tó- rem: ge- nu- í- sti



qui te fe- cit, et in ae- tér- num pérma-



nes Vir-go.

*NB. La sémiologie manquant pour cet offertoire "récent" (XIe s.), elle a été reconstituée à partir du 2e veset de l'off. "Angelus Domini" auquel la pièce emprunte sa mélodie - E210*