



# GRADUALE

GR. V

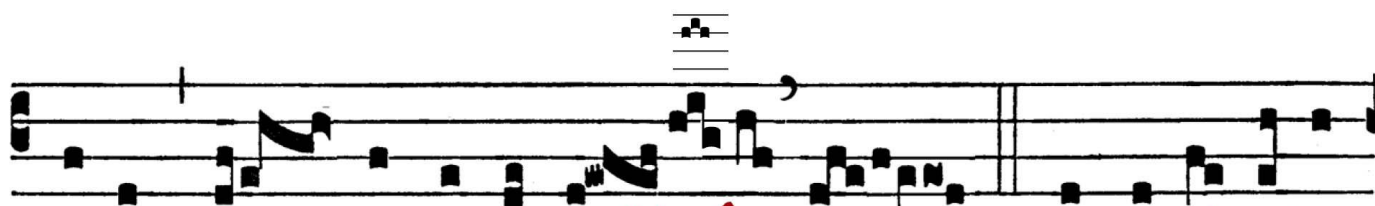
**D**



Omi-ná- bi-tur a ma- ri us-



que ad ma- re, et a flúmi- ne usque ad tér-



mi-nos or- bis terrá-rum. **V.** Et ad-o-rábunt



e- um



omnes re- ges ter- rae : o- mnes gen-



tes sér- vi- ent e- i.

*Handwritten red annotations:*  
✓    "    -    A A    ✓ / -    "    A A    A / - / -  
A / " A s A A /