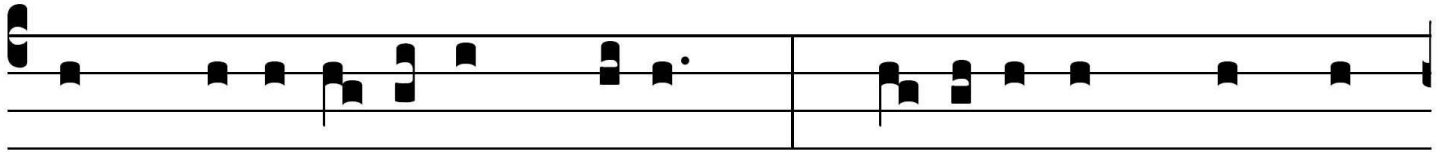


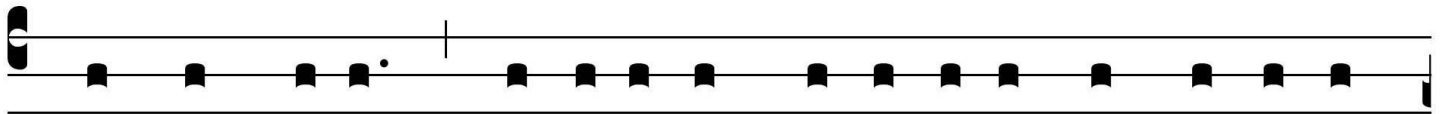


# ANTIPHONA AD INTROITUM

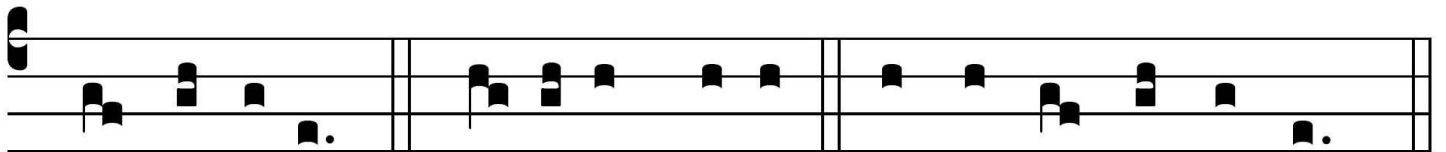
**I**ntret \* in conspéctu tu- o, Dó- mi-  
 ne, gé- mi- tus compe- di- tó- rum, redde vi- cí- nis  
 nostris sé- ptu- plum in si- nu e- ó- rum:  
 víndi- ca sán- gui- nem sanctó- rum tu- ó- rum,  
 qui ef- fú- sus est. *Ps.* De- us vené- runt gentes



in haere-di-tá-tem tu-am, \* po-lu-é-runt templum



sanctum tu-um: po-su-é-runt Je-rú-sa-lem in pomó-rum



cu-stó-di- am. Gló-ri- a Patri E u o u a e