



ANTIPHONA AD INTROITUM

Intr.
3.

D

E-US Isra- el conjú- gat vos, et

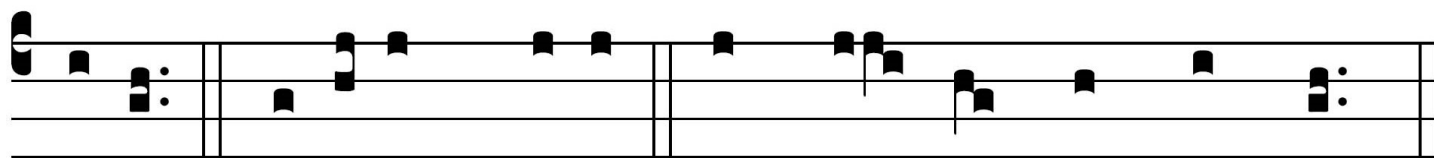
ipse sit vo-bí- scum, qui mi-sértus est

du-óbus ú- ni- cis: et nunc, Dó- mi- ne,

fac e- os plé- ni- us bene- dí- ce- re te. *T. P.*

ALlelú- ia. al- le- lú- ia. *Ps.* Be- á- ti omnes qui

timent Dómi- num: * qui ámbu- lant in vi- is



e-jus. Gló-ri- a Patri E u o u a e