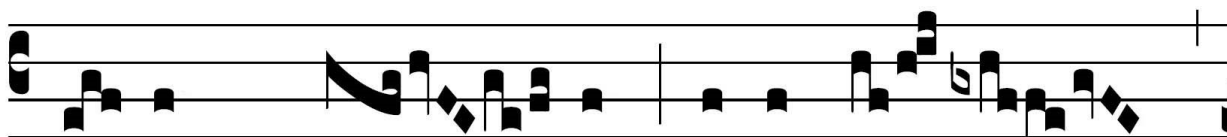




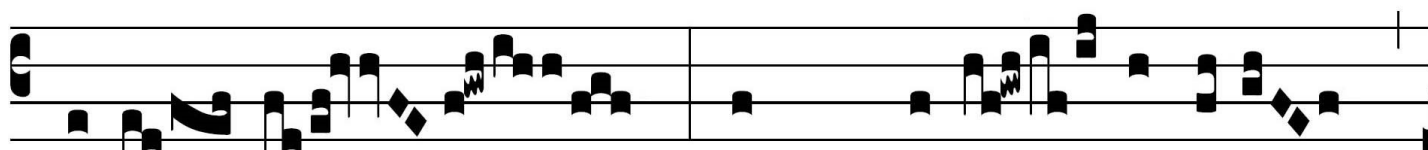
# GRADUALE

Grad.  
2.

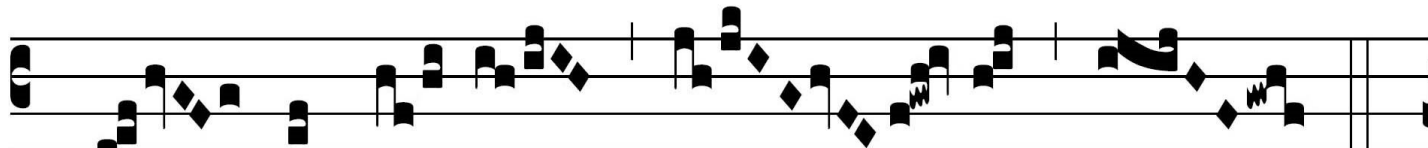
U



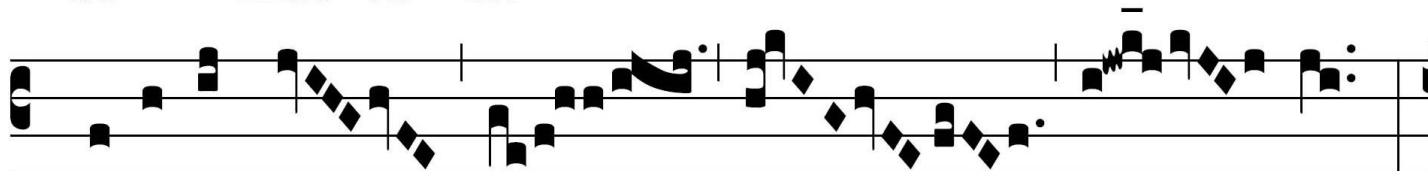
- xor \* tu- a sic-ut vi- tis



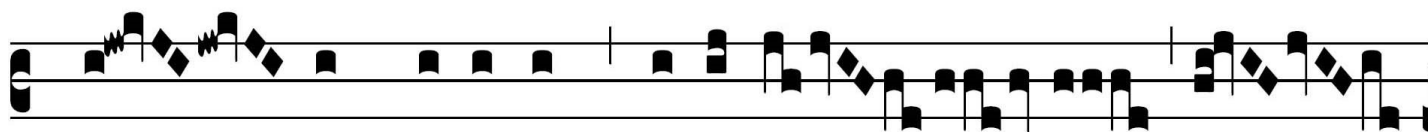
abún- dans in la-té- ri-bus



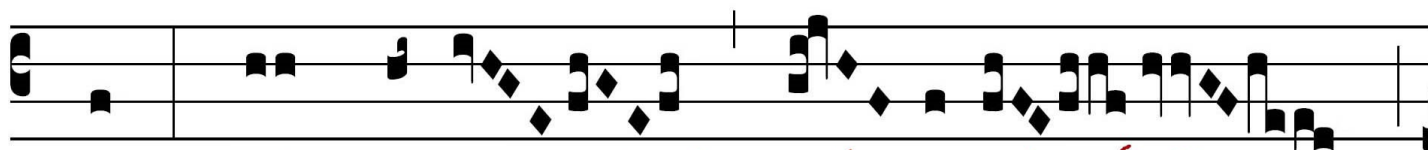
do- mus tu- æ.



∇. Fí-li- i tu- i



sic- ut novéllæ o-li-vá-



rum in circú- i-tu

mensæ                      \* tu- æ.

*Handwritten red neumes are written below the staff, corresponding to the lyrics. The first group of neumes is under 'mensæ', and the second group is under '\* tu- æ.'. The neumes are square and connected by lines, with some having flags or beams.*

*N.B. Sémiologie manquante - reconstituée à partir d'autres graduels du 2e mode*