

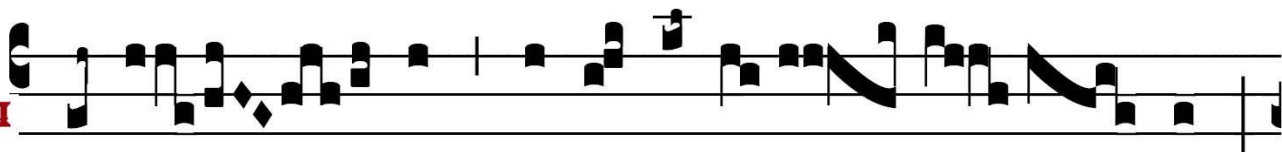
- - / / N: /

et refúgi-um mé-um, [et libe-rá-tor mé-us.] E u o u a e



GRADUALE

GR. III



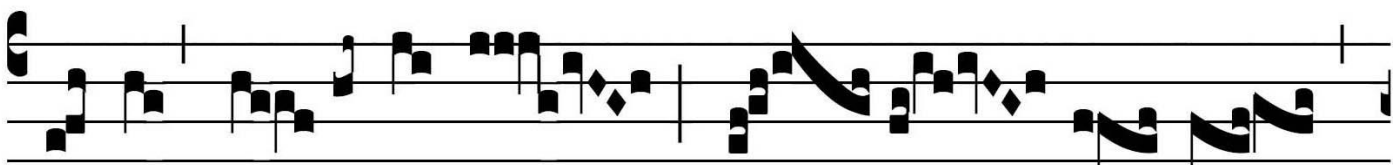
A *u a h j n s - - / u a s n h a m -*
 Djú- tor * in op-portu-ni- tá- ti- bus,



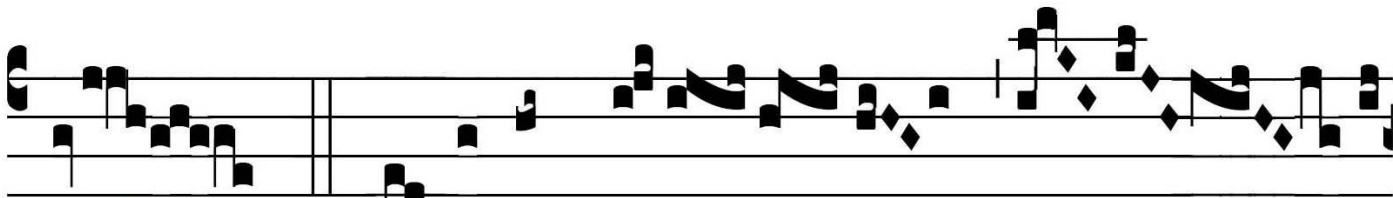
p a h / u f i n e t m - / u - s s / s
 in tri- bu- la- ti- ó- ne : spé- rent in te,



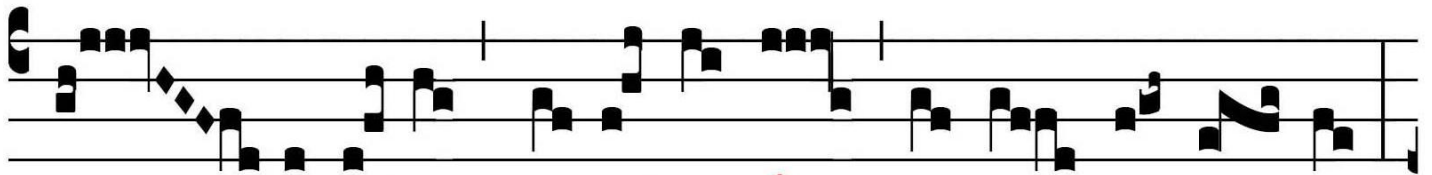
- - / n. h a a / u y i. s s h a a f - -
 qui nové- runt te : quó- ni- am non de- re-



/ a h h u a s n / = s i = s i s n n
 línquis quæ- rén-tes te, Dó- mi- ne.

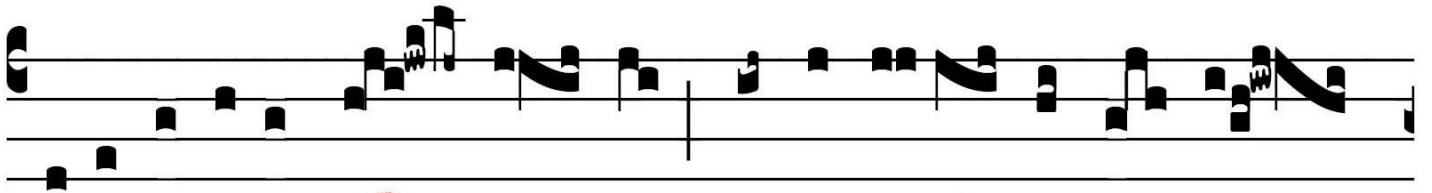


h h h f i h / u / s n n s i / u / i - n. a y
 ¶ Quó- ni- am non



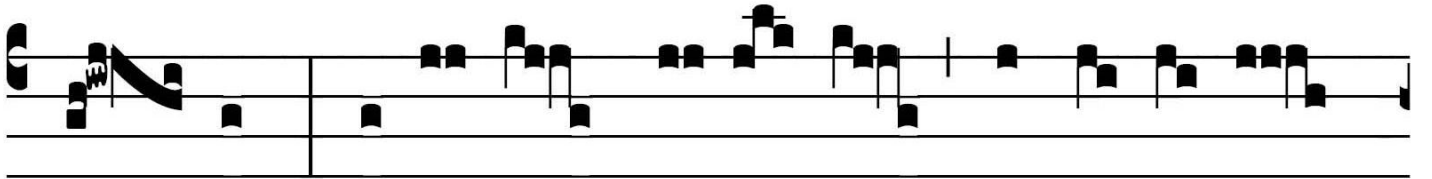
Handwritten red musical notation

in fi-nem ob-lí- vi- o e- rit páupe- ris :



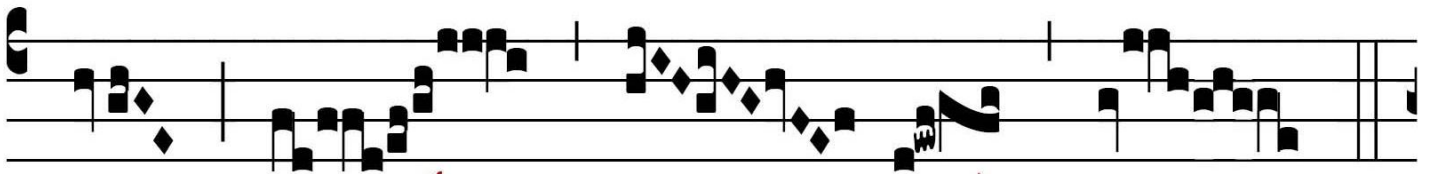
Handwritten red musical notation

pa-ti-én- ti- a páu- pe- rum non per- í- bit in æ- tér-



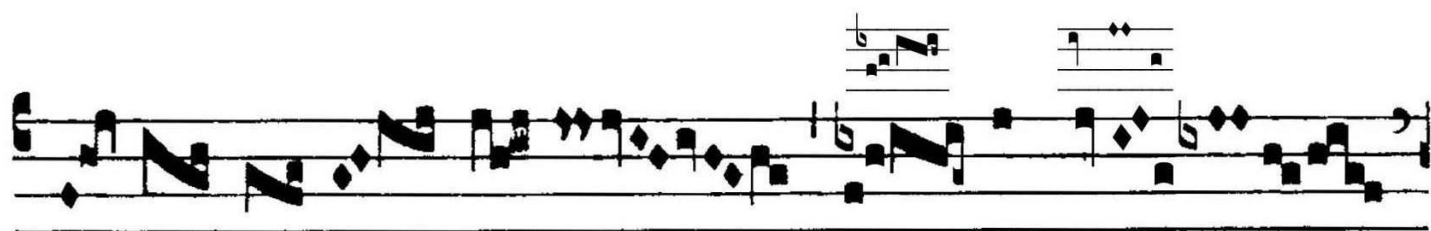
Handwritten red musical notation

num : exsúr-ge, Dó-mi- ne, non præ-vá- le-

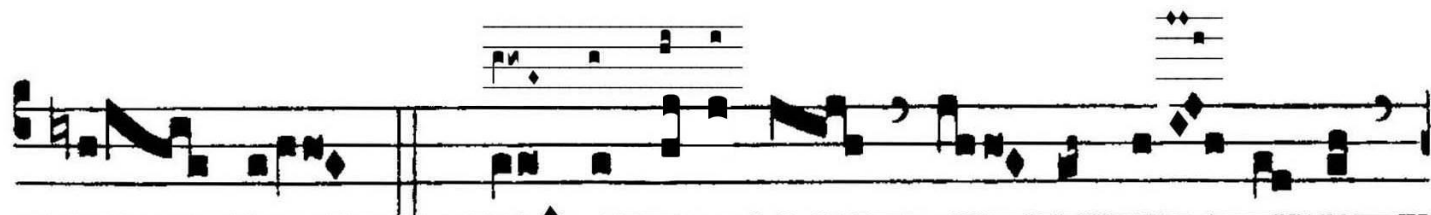


Handwritten red musical notation

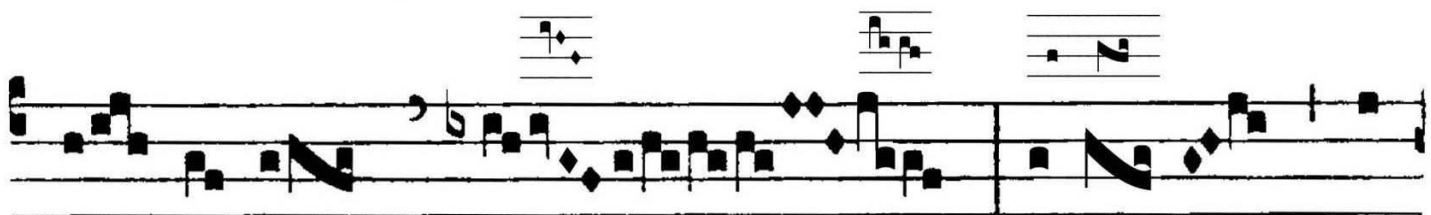
at * hó- mo.



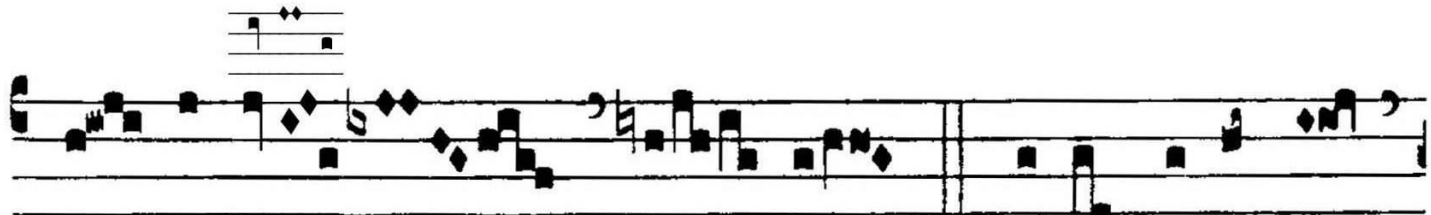
in o- ra- ti- *o-nem* ser- vi tu-



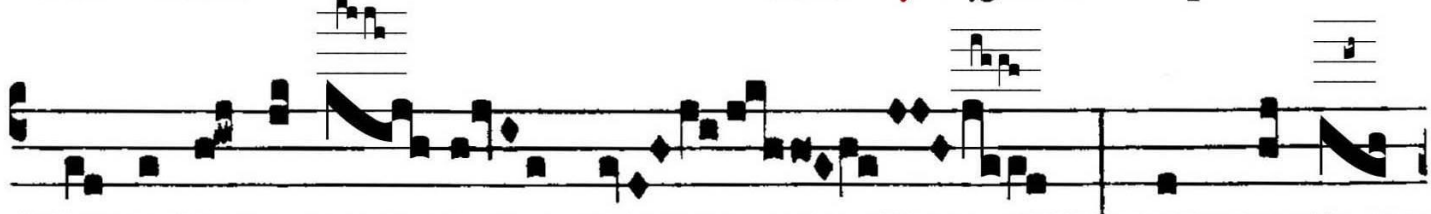
i. *Ps.* Si in- iqui- tá- tes ob- servá- ve- ris,



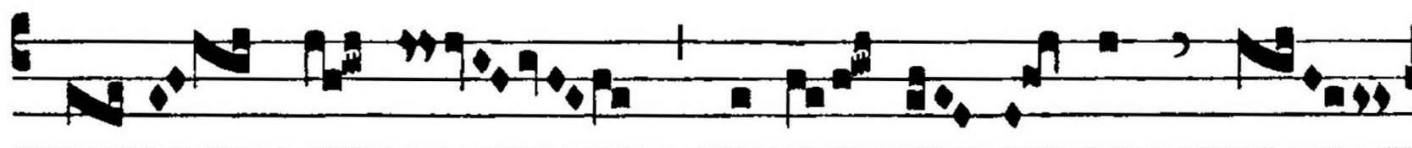
Dó- mi- ne : Dómi- ne, quis



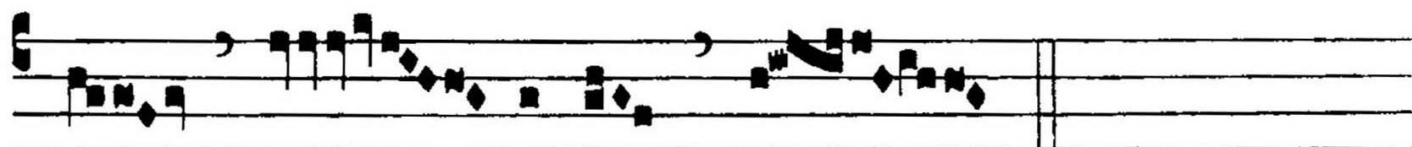
sus- ti- né- bit? *Ps.* Qui- a apud te



pro- pi- ti- á- ti- o est, et propter



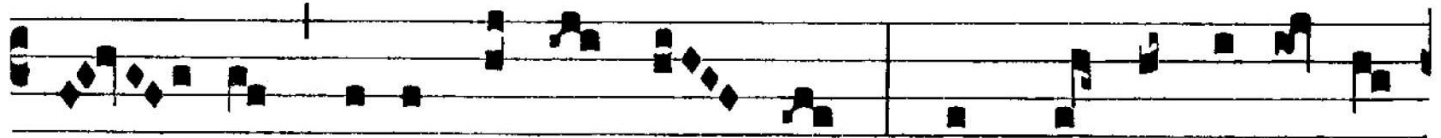
N .V *And* *2. 1. 1. A* - *And* *1. 1. /* *N. 2. 2.*
le- gem tu- am sus- tí- nu- i te, DÓ-



N. 1 *111 / 1. 1. - 1. 1.* *And* *N. 1. 1. 1.*
mi- ne.



di- a ú- be- ri : qui- a respé- xit ó- cu- lus



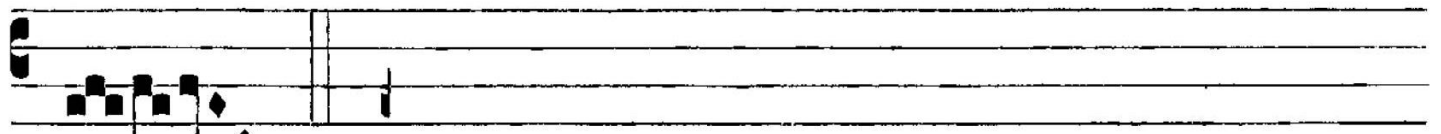
me- us in- i- mí- cos me- os et in- surgé- tes in



me ma- ligná- tes audí- vit



auris tu- a.



Bonum est.



ANT. AD COMMUNIONEM

CO. I

I

u N A - s i o / / - - p - m:
 L-lú- mi-na fá-ci- em tu-am super servum tu- um,

p p p s - u A :: - s i A u . . . / A
 et salvum me fac in tu- a mi- se-ri- córdi- a :

s - A / p p s = N - - s - . . . / s -
 Dó- mi-ne, non confúndar, quó- ni- am invo- cá- vi te.