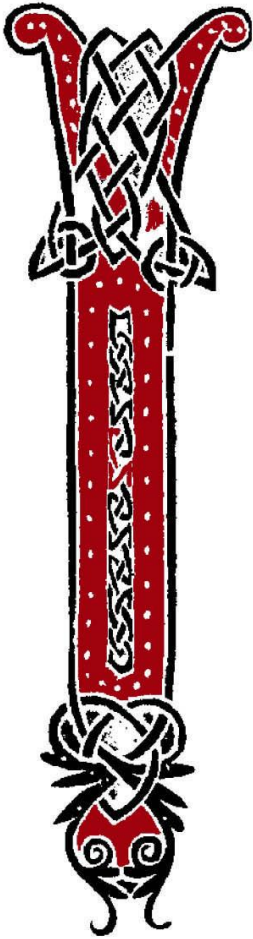




ANTIPHONA AD INTROITUM



p / N p - N
Nvo-cá- bit me, et e- go exáu- di- am



m - N // - N
e- um : e- rí- pi- am e- um, et glo-



. p / / -
ri- fi-cá- bo e- um : longi-tú-di-ne di-



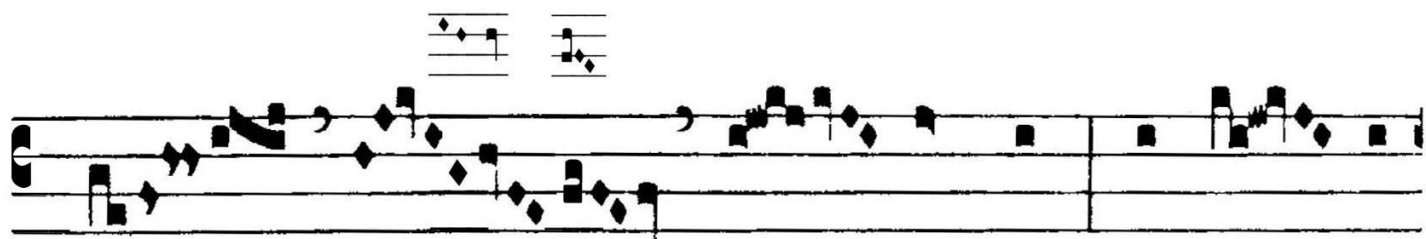
. p -
é- rum a- dimplé- bo e- um. *Ps.* Qui há-bi-tat in



l l l l A S S - A P S l l l l l l l l -
 adiu-tó-ri- o Altíssimi, in pro-tecti- óne De- i cae-li



l S S A l -
 commo-rá-bi-tur. Gló-ri- a Patri. E u o u a e.



Handwritten musical notation in red ink above the lyrics.
bunt te, ne un- quam



Handwritten musical notation in red ink above the lyrics.
offén- das ad lá- pi-dem



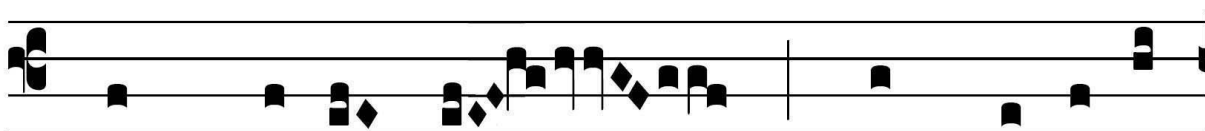
Handwritten musical notation in red ink above the lyrics.
pedem tu- um.



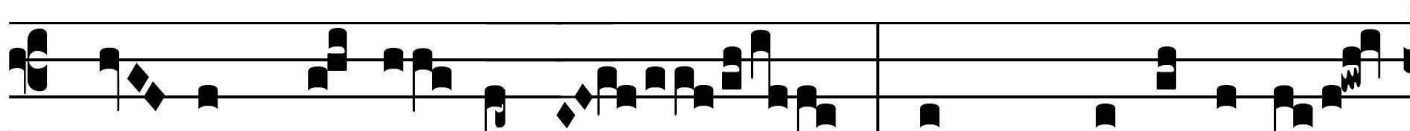
TRACTUS

Tract.
2.

Q



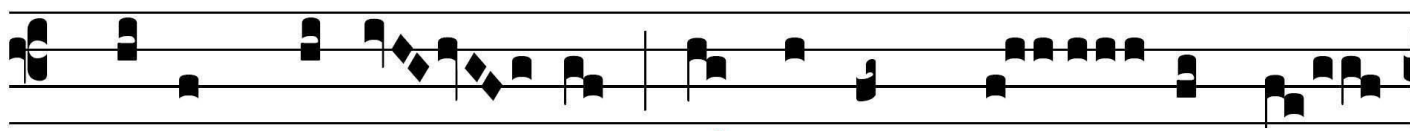
UI há-bi- tat * in adju-tó-



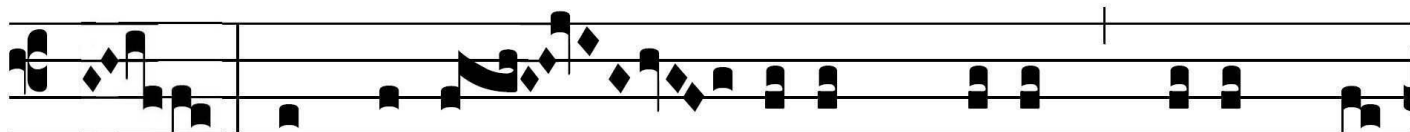
ri- o Al-tí- si-mi, in pro-lecti- ó-



ne De- i cae- li commo-rá- bi-tur, ∇.



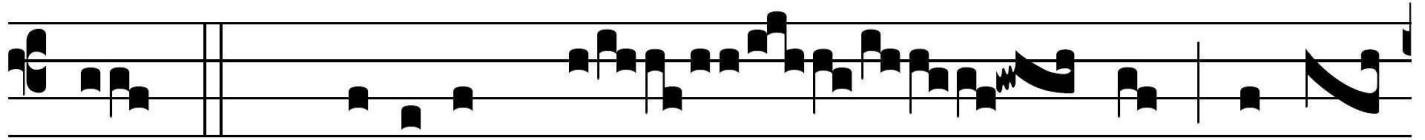
Di-cet Dómi- no: Su-scéptor me- us es,



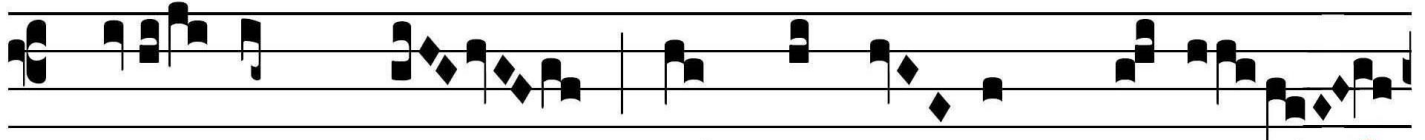
et re-fú- gi- um me- um, De- us me-



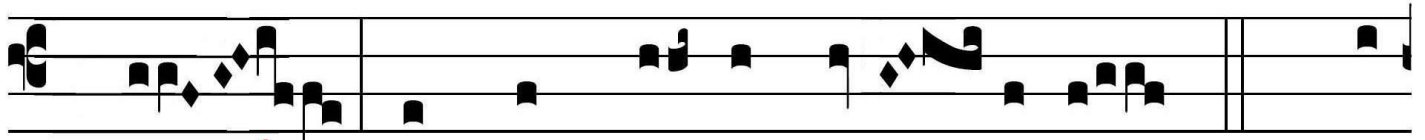
us: spe- rá- bo in e- um



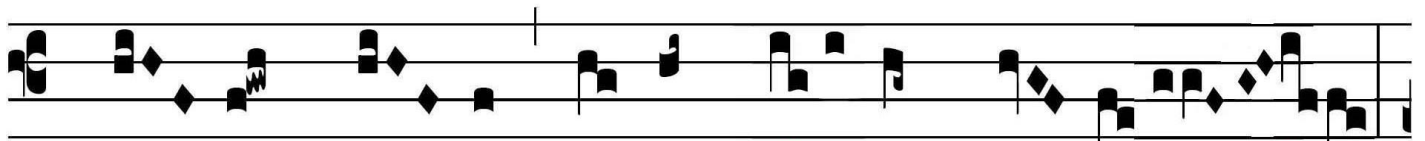
∇. Quóni- am i- pse li-be-



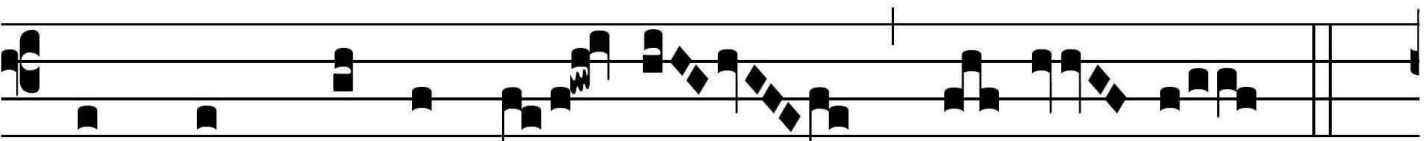
rá- vit me de láque- o ve-nán-ti- um,



et a ver-bo á- spe-ro. *∇*. Scá-



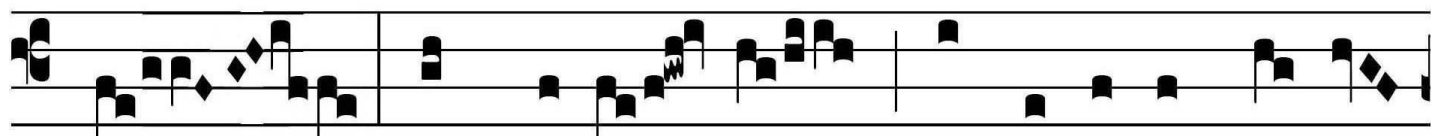
pu- lis su- is o-bumbrá- bit ti- bi,



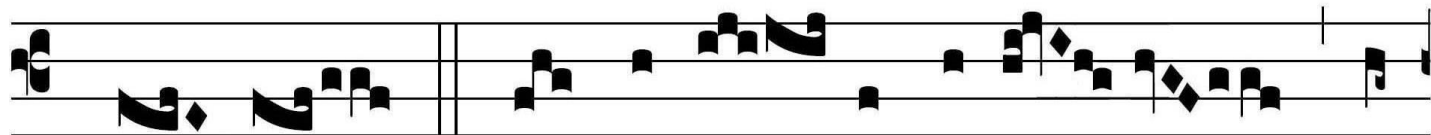
et sub pennis e- jus spe- rá- bis. *∇*.



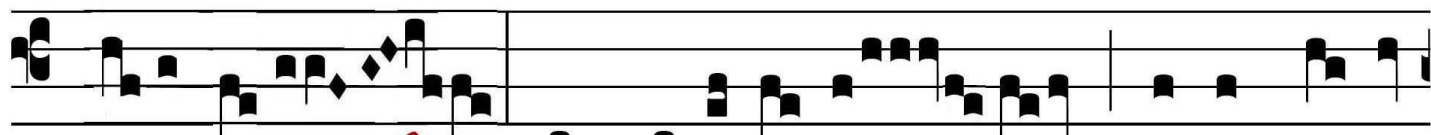
Scu-to circúm-da- bit te vé-ri- tas e-



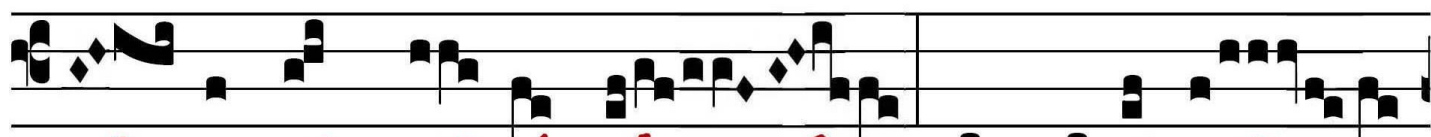
jus: non timé-bis a timó-re noctúr-



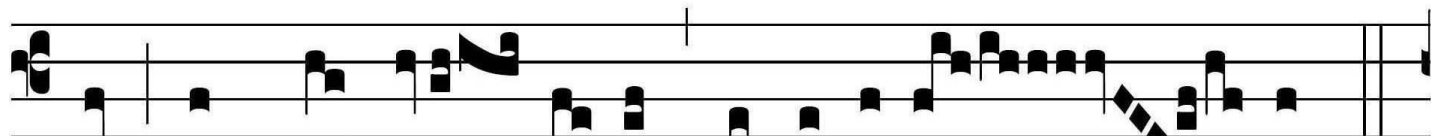
no. A sa-gít-ta vo-lán-te per



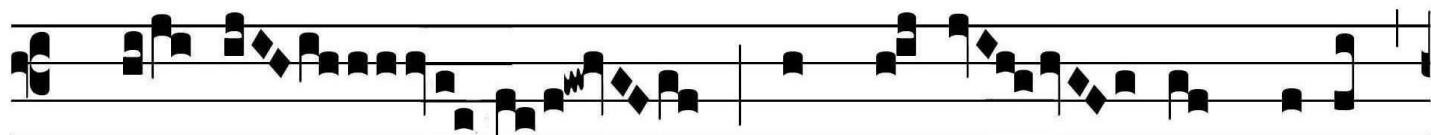
di-em, a negó-ti-o per-ambu-lán-



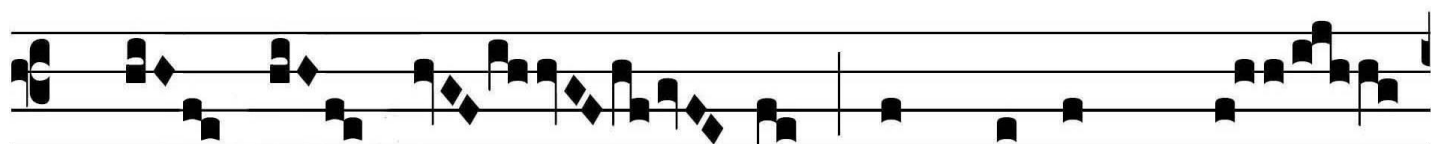
te in té-ne-bris, a ru-í-na



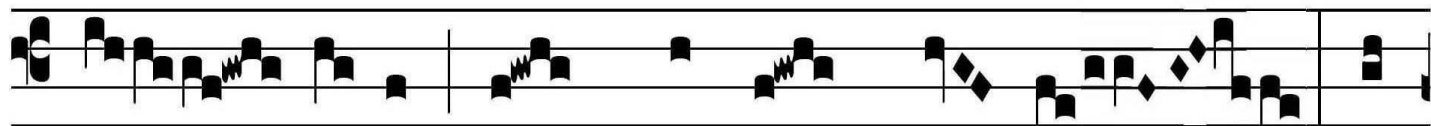
et daemó-ni-o me-ri-di-á-no. V.



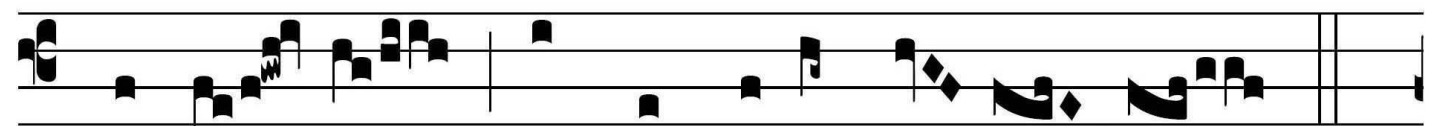
Ca-dent a lá-te-re tu-o



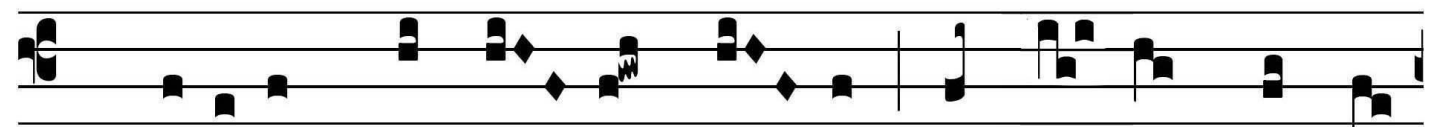
mil- le, et de-cem mil-



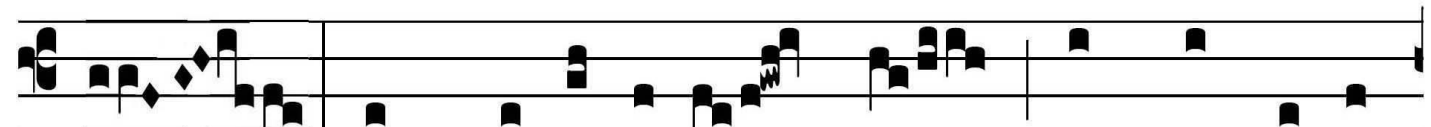
li- a a dextris tu- is: ti-



bi au- tem non appropinquá- bit. ∇.



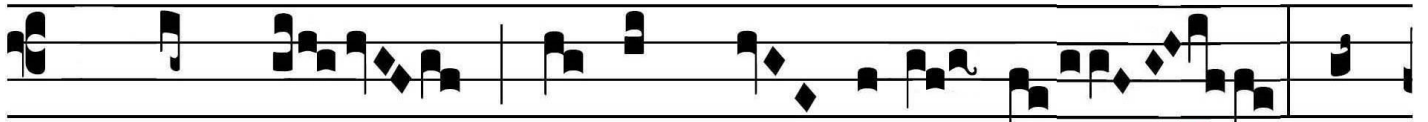
Quóni- am Ange- lis su- is mandá- vit de te,



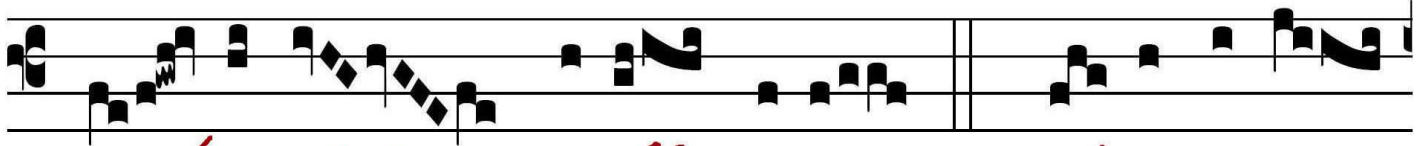
ut custó-di- ant te in ómni-bus



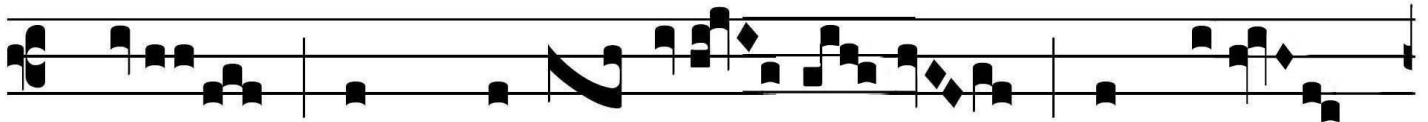
vi- is tu- is. ∇. In má-ni- bus por-tá-



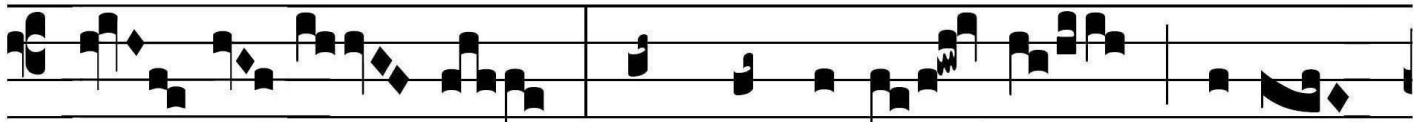
bunt te, ne unquam offén-das ad



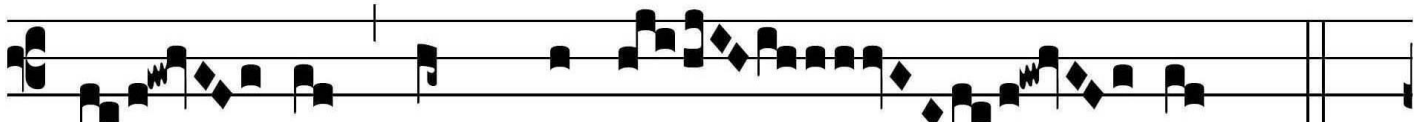
lá-pi-dem pedem tu-um. ∇. Su-per áspi-



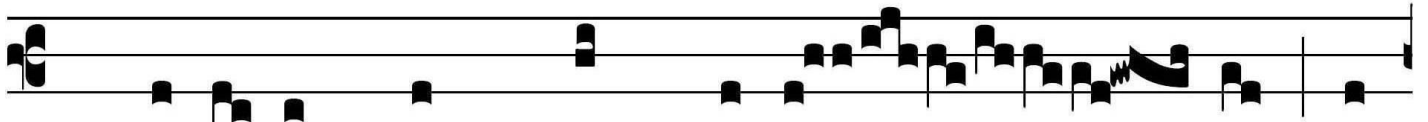
dem et ba-si-lís-cum ambú-la-



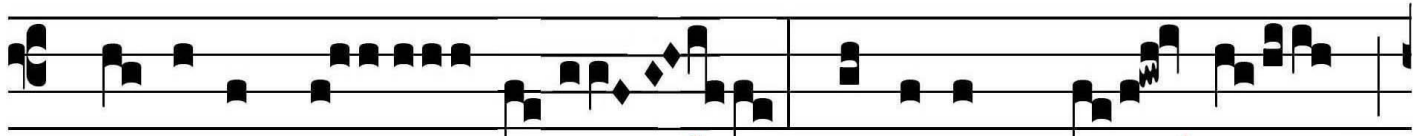
bis, et conculcá-bis le-ó-



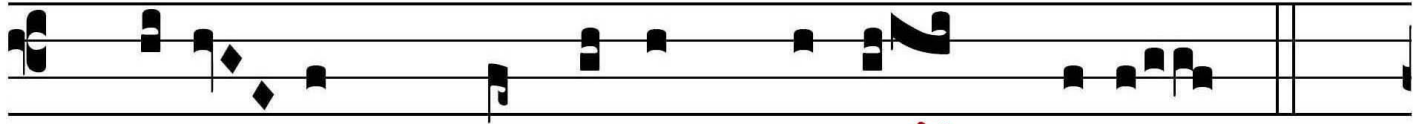
nem et dra-có-nem. ∇.



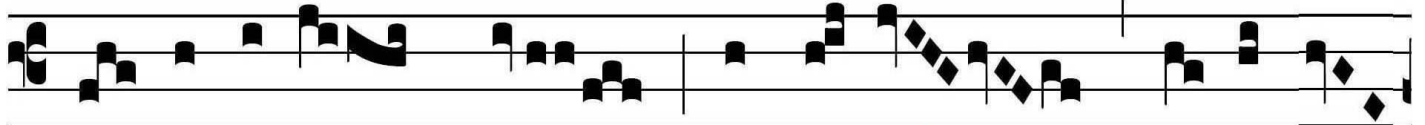
Quó-ni-am in me spe-rá-vit, li-



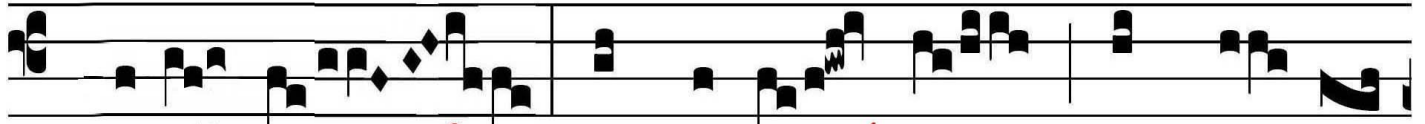
be-rábo e- um: pró-tegam e- um,



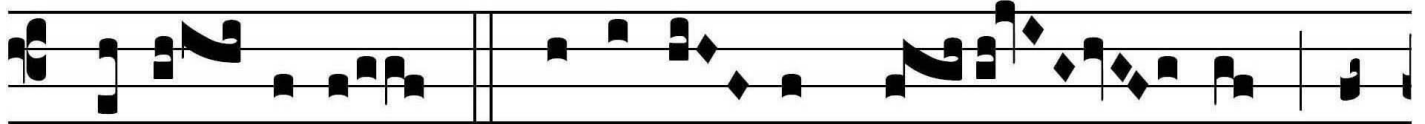
quóni- am co-gnó-vit nomen me-um. ∇.



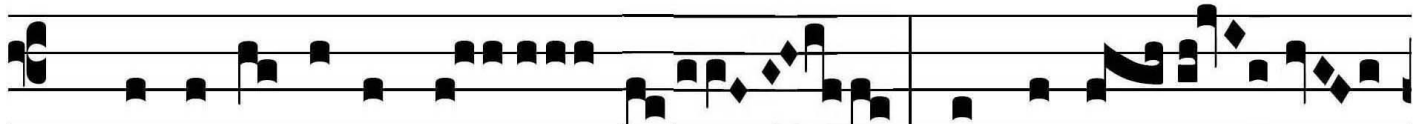
In-vo-cá-bit me, et e-go exáudi-



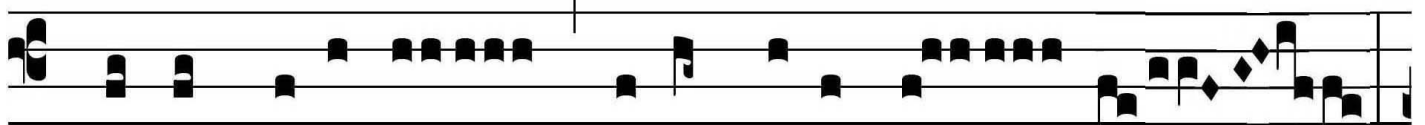
am e- um: cum ipso sum in tri- bu-



la-ti- óne. ∇. E-ri-pi- am e- um, et



glo-ri- fi-cábo e- um: longi-tú-



di-ne di-é-rum adimplébo e- um,



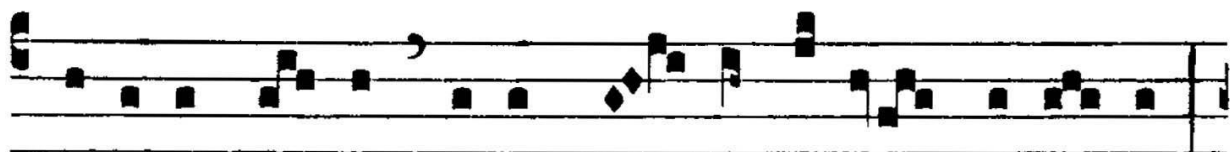
- - *mp* - *mp* *mp* *mp* *mp* *mp* *mp* / *mp* /
et osténdam il- li sa- lu-tá- re * me-

mf *mf* *mf* *mf* *mf* *mf* *mf*
um.



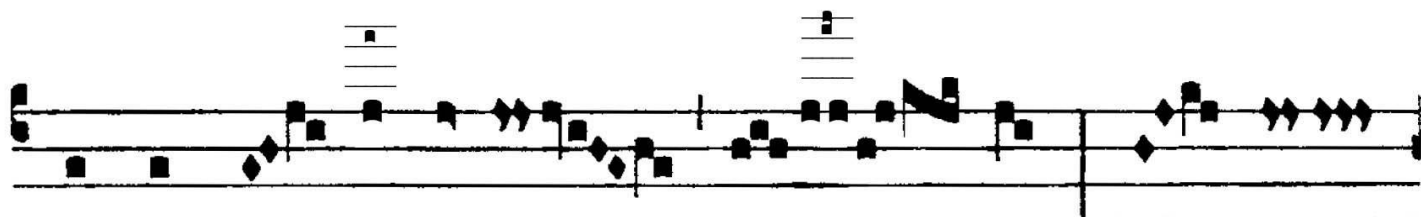
ANT. AD OFFERTORIUM

OF. VIII

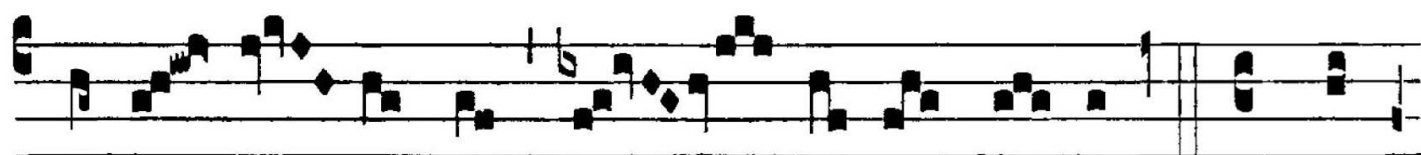


S

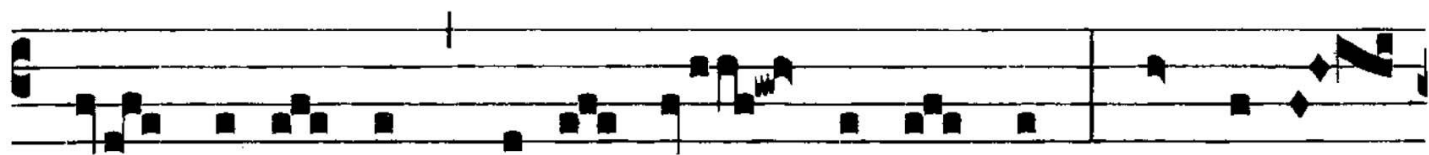
Cápu-lis su- is obumbrá- bit ti-bi Dómi- nus,



et sub pen- nis e-ius spe- rá- bis : scu- to



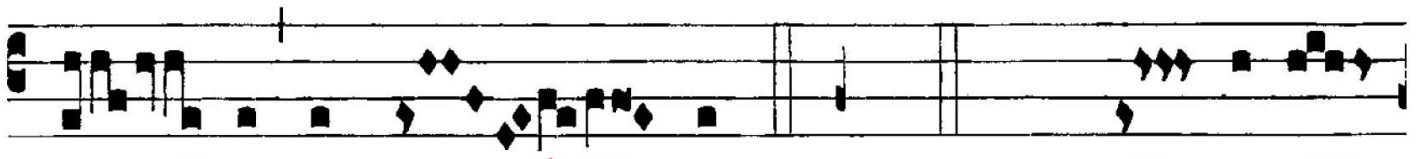
circúm-da- bit te vé- ri- tas e- ius. *V. 1.* Di-



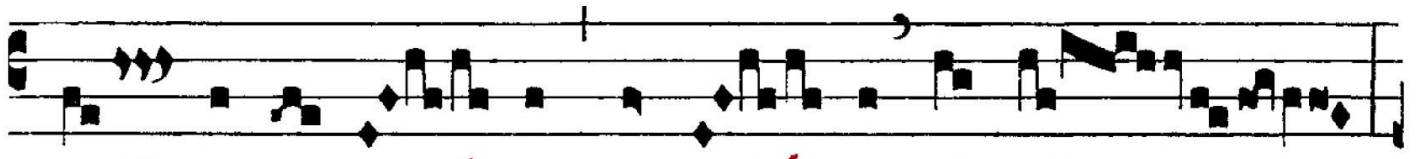
cet Dómi- no : ^{vot} Suscé-ptor me- us es, non timé-



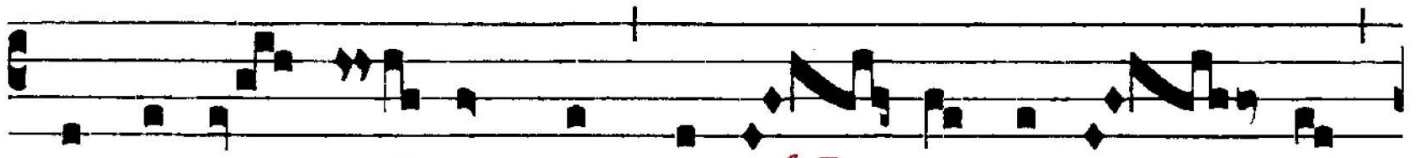
bis a timó- re no- ctúr- no a sa-gít- ta vo-



lán- te per di- em.* Scuto. *V. 2.* Quó- ni- am



An- ge- lis su- is mandá- vit de te,



ut custó- di- ant te, ne un- quam of- fén- das



ad lá- pi- dem pe- dem tu- um. *V. 3.* Super

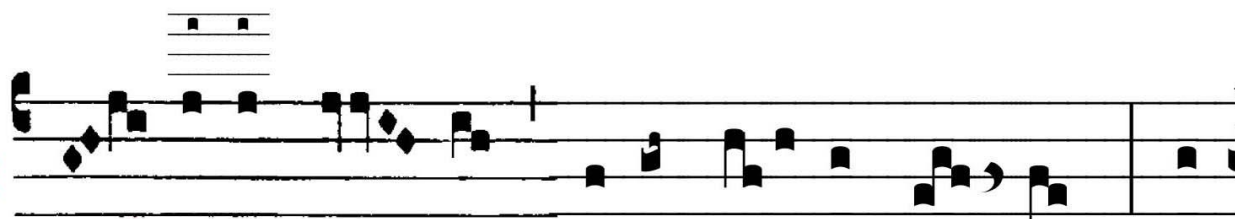


áspi- dem et ba- si- líscum am- bu- lá- bis : et



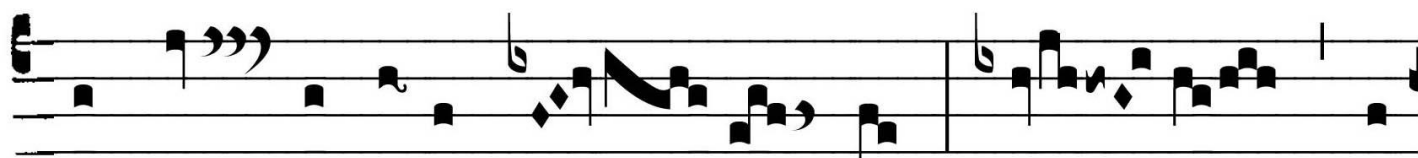
AUT. AD COMMUNIONEM

CO. III



S

Cá- pu-lis su- is obumbrá- bit ti- bi, et



sub pen- nis e-ius spe- rá- bis : scu- to cir-



cúm da- bit te vé- ri- tas e- ius.