



# ANTIPHONA AD INTROITUM

**V**  
 Ó- cem iucundi- tá- tis annunti- á- te,

et au- di- á- tur, alle- lú- ia : nunti- á- te

us- que ad extré- mum ter- rae : li- be- rávit Dó-

mi- nus pó- pu- lum su- um, al- le- lú- ia, alle-

lú- ia. *Ps.* Iu- bi- lá- te De- o omnis ter- ra :



*p* ✓ / / / / / / / - " " *^* ✓ - - " *^* *p* / *p* ✓  
psalmum dí-ci-te nómi-ni ē-ius, da-te gló-ri-am laudi e-ius.



# Alleluia I

I.

**A** L-le- lú- ia. \* *ij.*

*∇.* Surre- xit Chri- stus, et

il-lú-xit no- bis, quos redé- mit sán-

gui- ne \* su- o.



# Alleluia II

VII

**A**



L- le-

lú- ia.



**∇**. Exí- vi a



Pa-

tre, et ve-

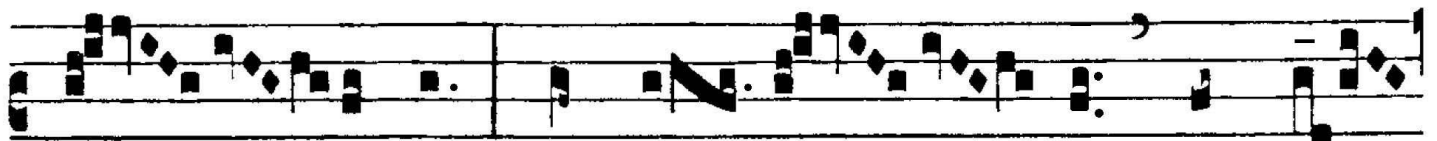
ni in



mun-dum : í-te-

rum re-línquo

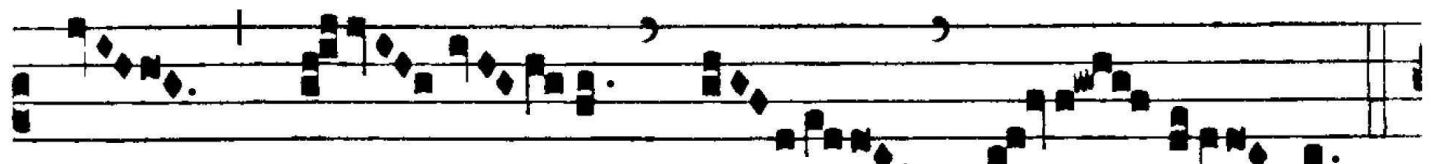
mun-



dum, et va-

do

ad Pa-



trem.





ca-ti-ó-nem me-am, et mi-se-ri-cór-di-am

sú-am a me, al-le-lú-ia.

V. 1. Iu-bi-lá-te De-o omnis ter-

ra, psalmum dí-ci-te nó-mi-ni e-ius :

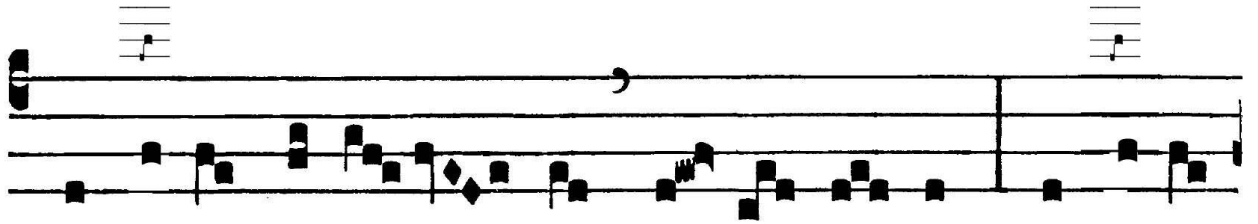
da-te gló-ri-am lau-di e-ius.





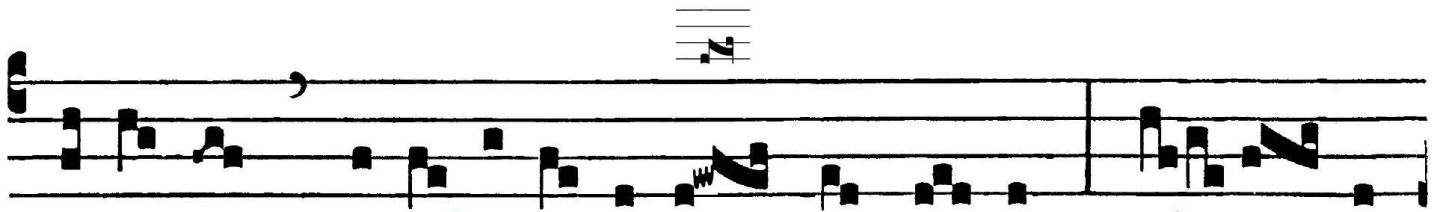
# ANT. AD COMMUNIONEM

CO. I

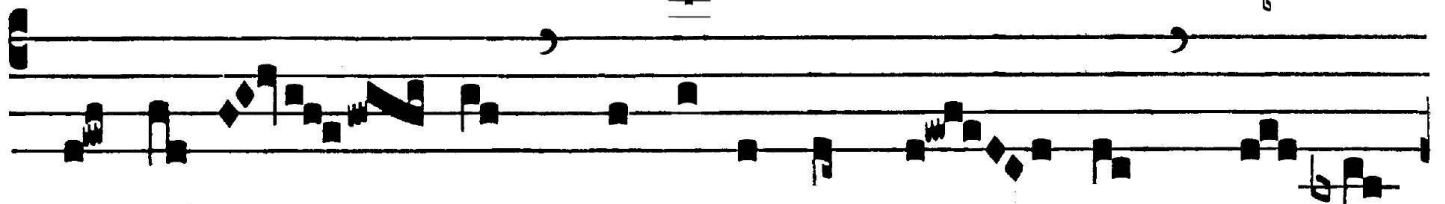


C

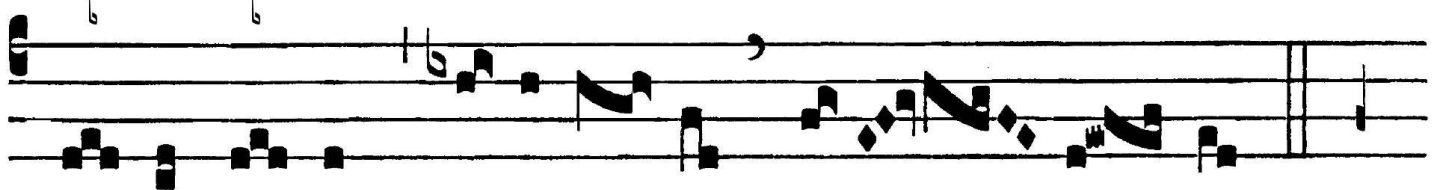
Antá-te Dómi- no, al-le- lú- ia : cantá-te



Dómi- no, be-ne- dí- ci- te no- men e- ius: be- ne



nun- ti- á- te de di- e in di- em sa- lu-



tá- re e- ius, alle- lú- ia, alle- lú- ia.