



ANTIPHONA AD INTROITUM

D Ō-mi-nus for-ti-túdo ple-bis su-ae, et pro-

téctor sa-lu-tá-ri-um Chri-sti su-i est :

sal-vum fac pópu-lum tu-um, Dómi-ne, et béne-

dic he-re-di-tá-ti tu-ae, et rege e-os

usque in saé-cu-lum. *Ps.* Ad te Dómi-ne clamábo,



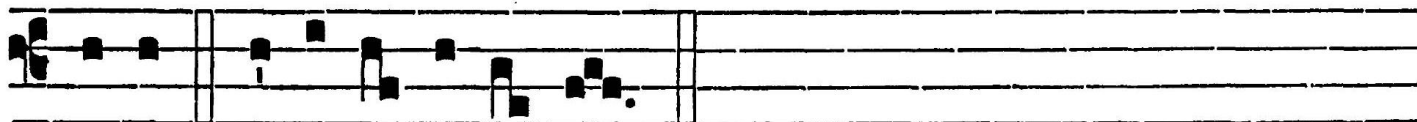
/ / / / / A J / J A A J -

De- us me- us ne sí- le- as a me : nequándo tá- ce- as a



/ A / A S

me, et assimi- lábor descendéti- bus in la- cum. Gló- ri- a



Patri. E u o u a e.



GRADUALE

GR. V

C

Onvér- te- re Dó- mi- ne a- li- quán-

tu- lum, et depre- cá- re super ser- vos tu- os.

re- fú- gi- um fa- ctus es no-

re- fú- gi- um fa- ctus es no-

bis, a ge- ne- ra- ti- ó- ne et progé- ni- e.



A 1: 1: A 1: A 5 A 1:



Alleluia

III



A

L-le- lú- ia.



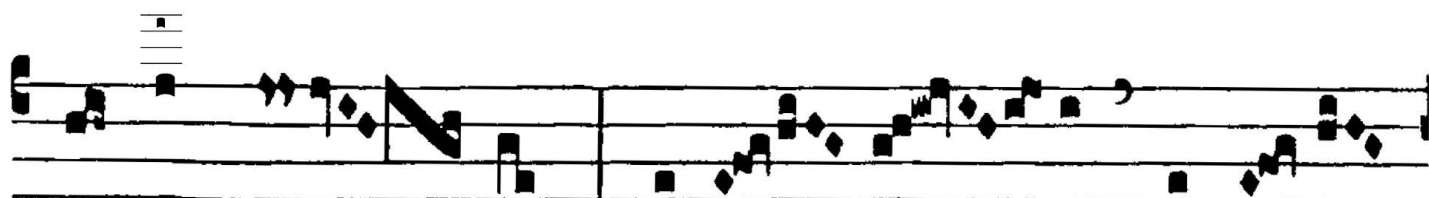
V. In te Dó- mi- ne spe- rá- vi, non confún-



dar in ae- tér- num: in tu- a iu- stí- ti- a



lí- be- ra me, et é- ri- pe me: inclí- na ad me



au- rem tu- am, accé- le- ra ut e- rí-

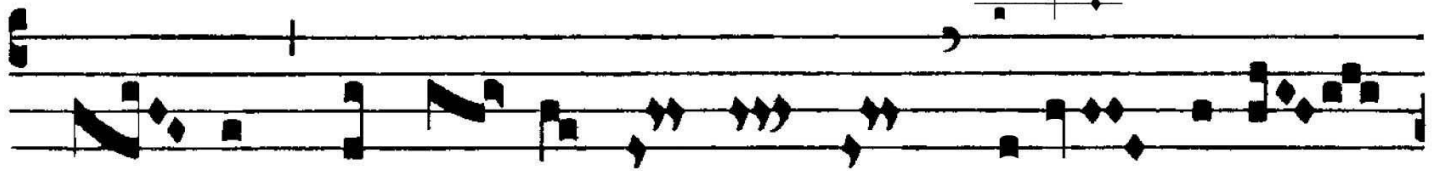


ANT. AD OFFERTORIUM

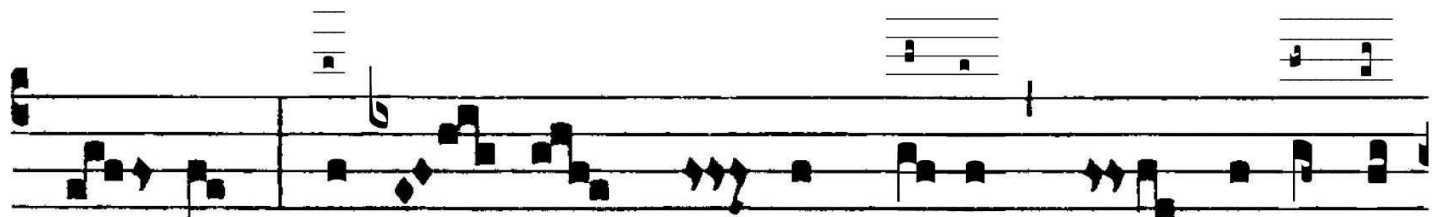
OF. IV

P

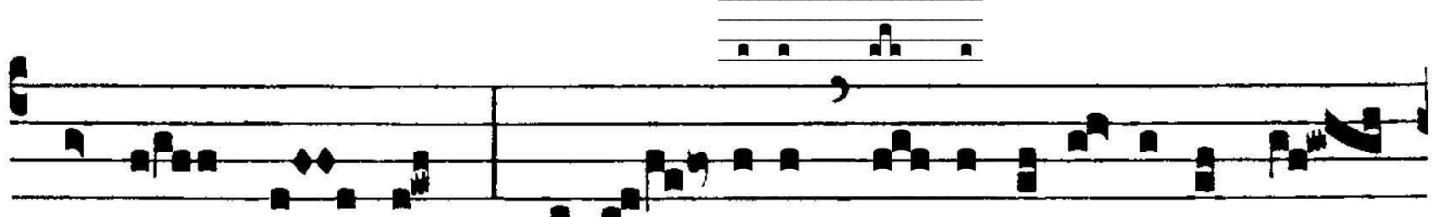
Er- fi- ce gres- sus me- os in sé- mi- tis



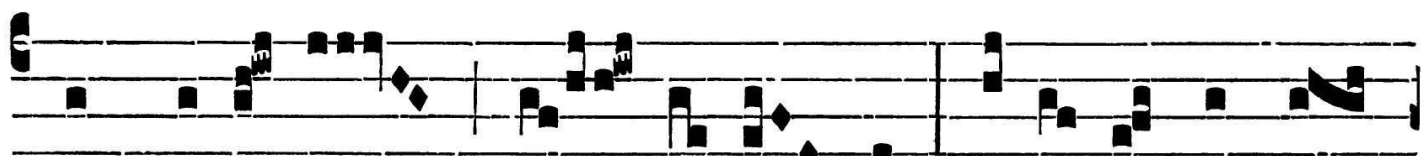
tu- is, ut non mo- ve- á- n- tur vestí- gi- a



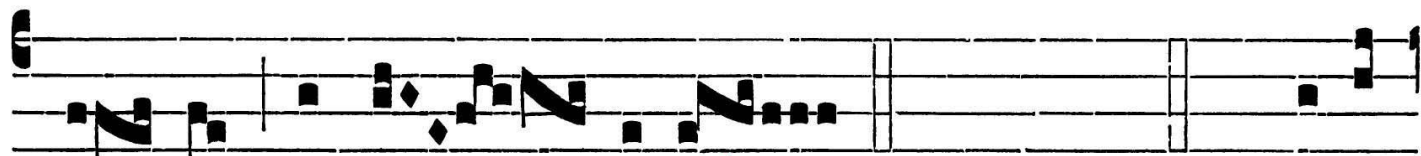
me- a : inclí- na au- rem tu- am, et exáudi



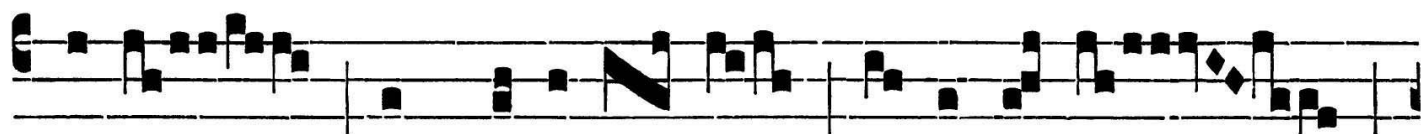
verba me- a : mi- rí- fi- ca mi- se- ri- có- rdi- as tu-



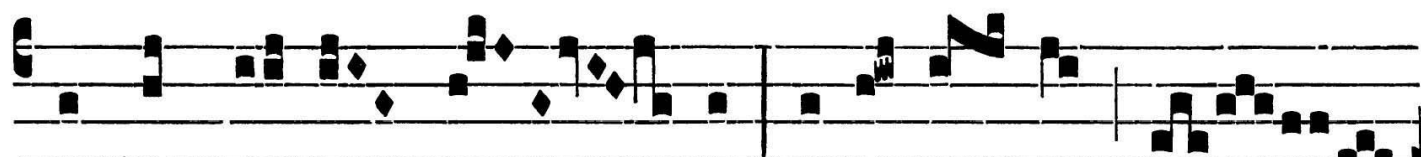
- - =w >> R_ X S w X J: - ✓ X : / N
 rum tu- á- rum pró- te-ge me : é-ri- pe me Dó-



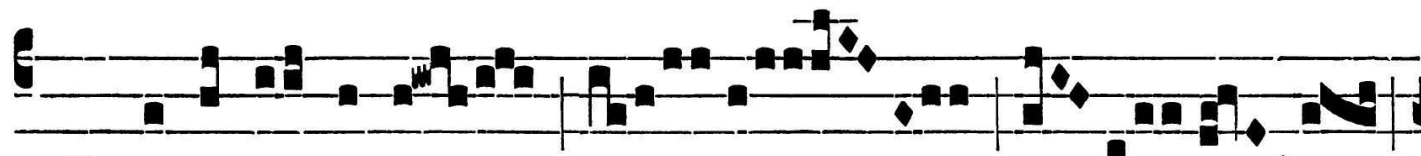
1: / X / R_ S P - M 12 - ✓
 mi- ne ab ím- pi- o. * Qui salvos. V. 3. Ego



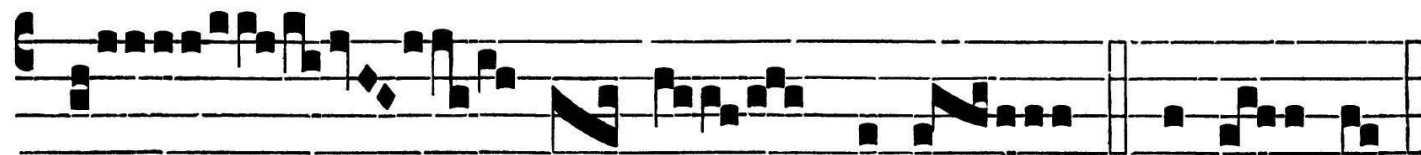
/ ħ >> R_ X - ✓ / N M X - : ħ 12 7: R_ X
 autem cum iustí- ti- a appa- ré- bo



/ u : ħ R_ / R_ ✓ - X - - / w - N X S S 12 S
 in conspé-ctu tu- o : sa- ti- á- bor, dum



ħ / ✓ : - w S ħ 12 : >> S: : 1: : S ħ w N
 ma- ni- festá- bi- tur gló-

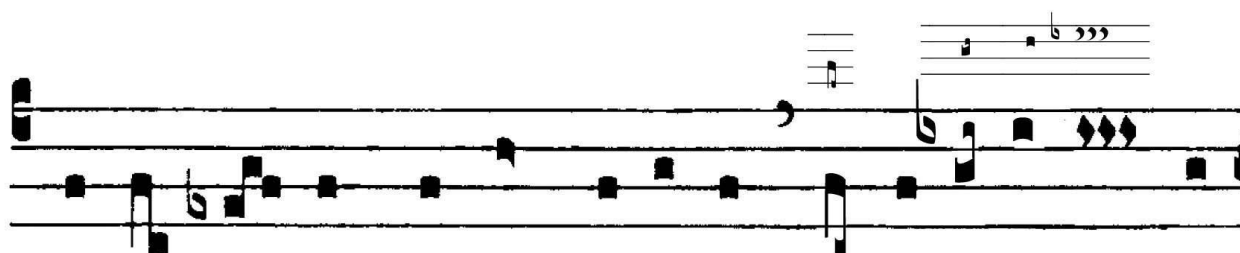


- >>> : N: : ħ ħ ħ S - R_ ħ 12
 ri- a tu- a. * Dómi- ne.



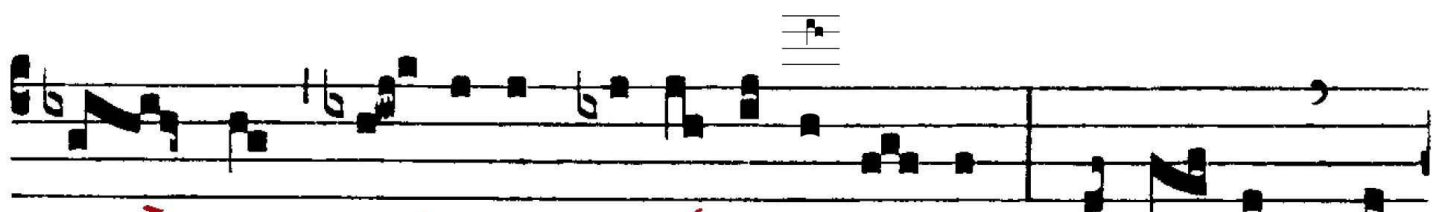
ANT. AD COMMUNIONEM

CO. VI



C

Ircu- í- bo, et immo-lá-bo in tabernácu- lo



e- ius hó- sti- am iu- bi- la- ti- ó- nis : cantá- bo, et



psal- mum di- cam Dómi- no.