


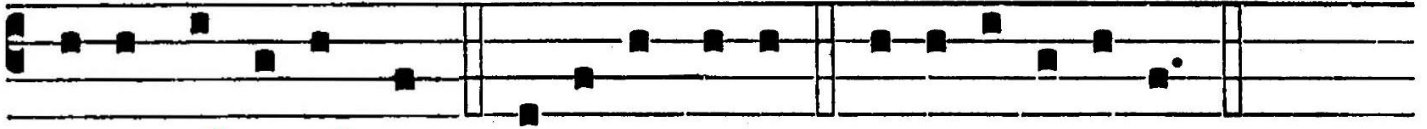


ANTIPHONA AD INTROITUM

IN. V



Cce De- us ádiu-vat me, et DÓ-mi-nus
 sus-cép-tor est á-nimae me- ae : avérte ma- la
 in-i- mí- cis me- is, in ve- ri-tá-te tu- a dispérde
 il-los, pro-té-ctor me- us Dómi- ne.
Ps. De- us in nó-mi-ne tu-o sal-vum me fac: et in virtú-te



tu- a iú-di-ca me. Gló-ri- a Patri. E u o u a e.



GRADUALE

GR. V



D

W - - N A W - III: N A I N
O-mi-ne Dó- mi-nus noster, quam



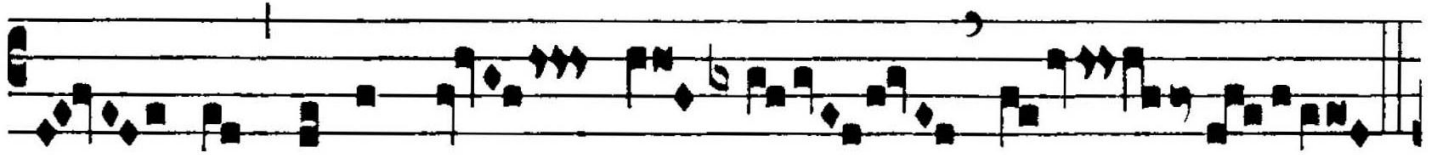
P V / A / A V / I A W: / S - / A V /
admi-rá- bi- le est nomen tu- um in u-ni-vér-



A W = w: N ? ? / N I N - - - - *A*
sa ter- ra! **V.** Quó-ni- am e- le-



V / S A / A S / / / / / *A V / V A A*
vá-ta est magni- fi-cénti- a



tu- a super cae- los.



Alleluia

II

A

L-le-
lú-ia.

∩. E-ri-pe
me de in-imí-cis me- is,

De-
us me-
us : et ab insurgén-

ti- bus in me lí-



ANT. AD OFFERTORIUM

OF. IV

I

Ustí- ti- ae Dómi- ni re- ctae, lae-



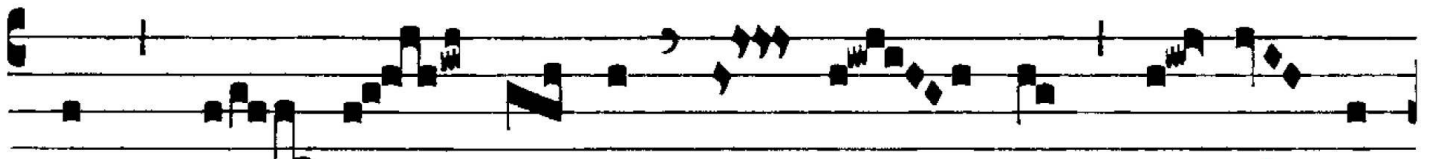
ti- fi-cántes cor- da, * et dul-ci- ó- ra su-




per mel et fa- vum : nam et servus tu- us cu-



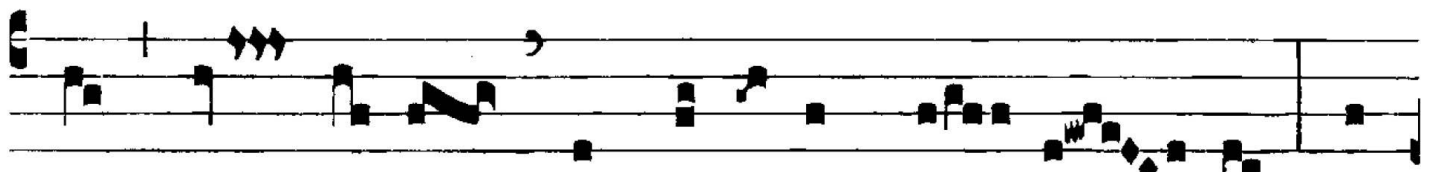
stó- di- et e- a. *V.1.* Praecé-

ptum Dó- mi- ni lú- ci- dum il- lú- mi-



nans ó-cu- los : ti- mor De- i san-



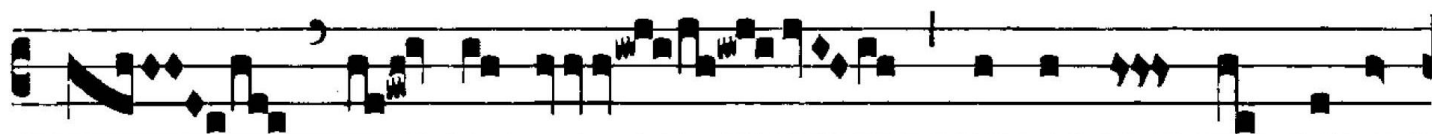
ctus pér- ma-net in saécu-lum saé- cu- li : iu-



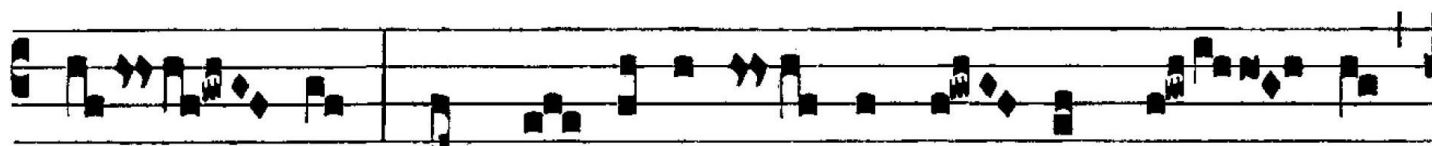
dí- ci- a Dó- mi- ni ve- ra. * Et dulcióra.



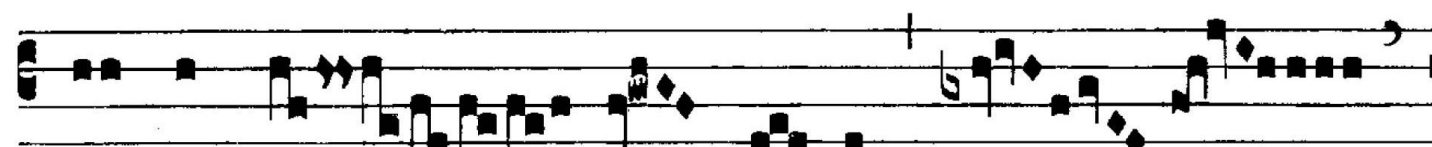
V. 2. Et e- runt, ut complá-



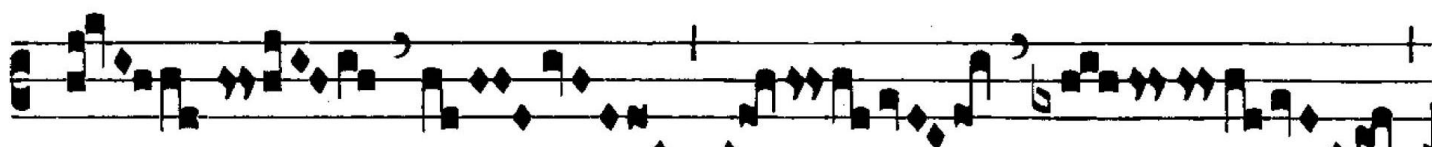
N :- *A* *And* *A* *ff* *And* *f* *A* - - - *A* / *p*
 ce- ant e- lóqui- a o- ris



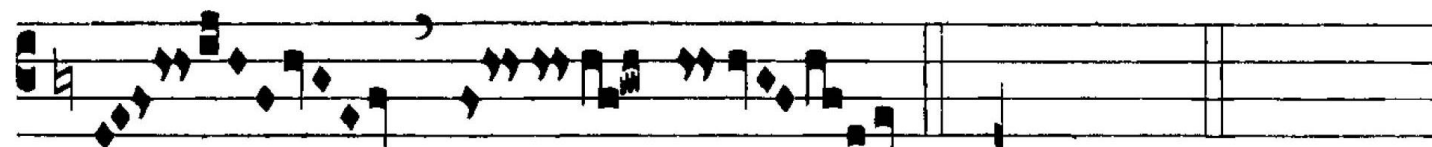
A *ff* *And* *A* *p* *f* *f* / *ff* - *And* *f* *And* / *A*
 me- i et me- di- tá- ti- o cor- dis me- i



f / *A* *ff* *A* *A* *A* / *And* *f* - *f* / *f* / *f* / *ff* *x*
 in conspé- ctu tu- o sem-



f / *A* *ff* *A* *x* *A* :- *f* *f* *f* *ff* *A* / *f* / *f* *ff* *A* / *f*

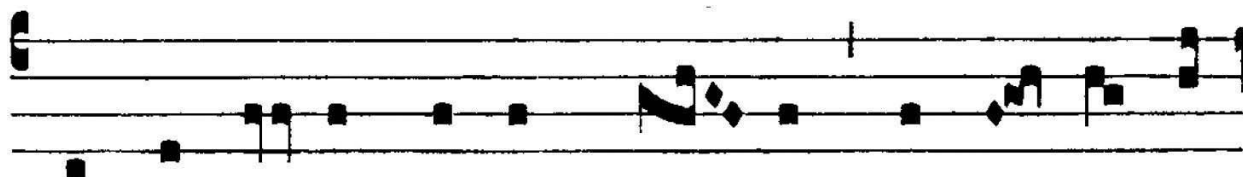


ff *f* / *f* / *f* *ff* *And* *ff* *f* *A* /
 per. * Et dulcióra.



ANT. AD COMMUNIONEM

CO. VI

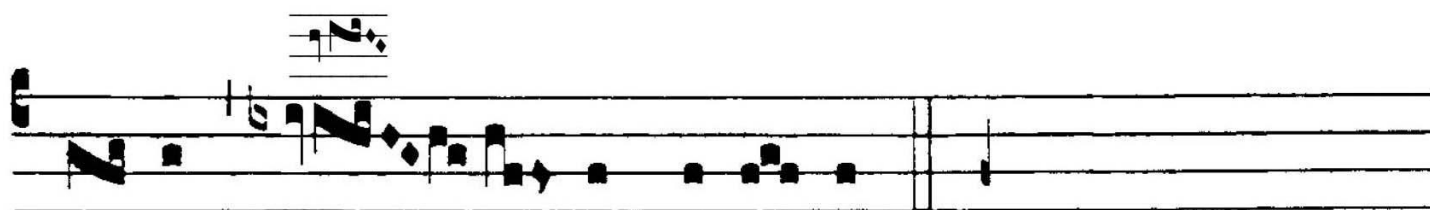


Q

UI mandú- cat carnem me- am, et bi- bit sán-



gui-nem me- um, in me ma- net, et e- go in



e- o, di- cit Dómi- nus.