



ANTIPHONA AD INTROITUM

IN. III



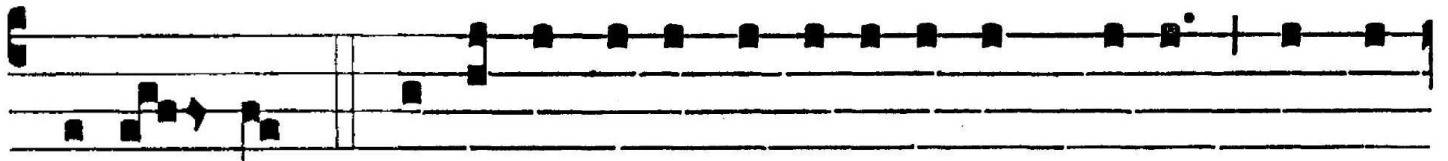
UM cla-má-rem ad Dó-mi-num, exaudí- vit

vo- cem me- am, ab his qui appro- pínquant

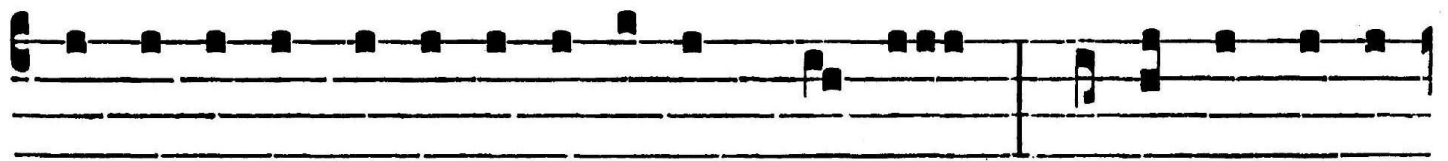
mi- hi : et humi- li- á- vit e- os, qui est ante saé-

cu- la, et ma- net in ae- tér- num : ia- cta cogi-

tá-tum tu- um in Dómi- no, et ipse te e-



nútri- *Ω, π* et. *Ps.* Exáudi De- us o-ra-ti- ó-nem me- am, et ne



despé-xe-ris depre-ca- ti- ó-nem me- am : * inténde mi-hi,



et ex-áudi me. Gló-ri- a Patri. E u o u a e.



GRADUALE

GR. I

C

Ustó-di me,

Dó- mi- ne,

ut pu-píl- lam ó-cu- lí :

sub umbra

a-lá-

rum tu- á-

rum

pró-

te-

ge



me. De vul-tu tu- o

iu-dí- ci- um me- um

pró-e- at : ó- cu- li tu-

i ví- de- ant

aequi- tá- tem.

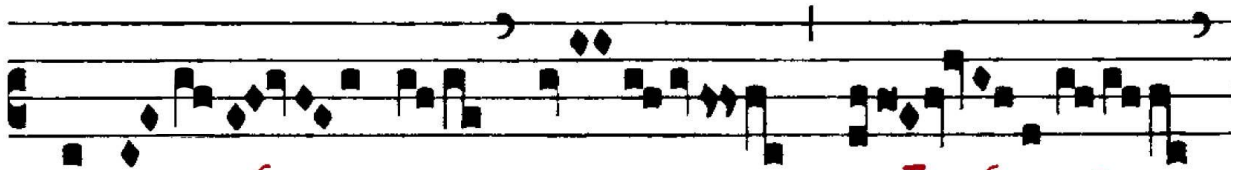


Alleluia



VII

A



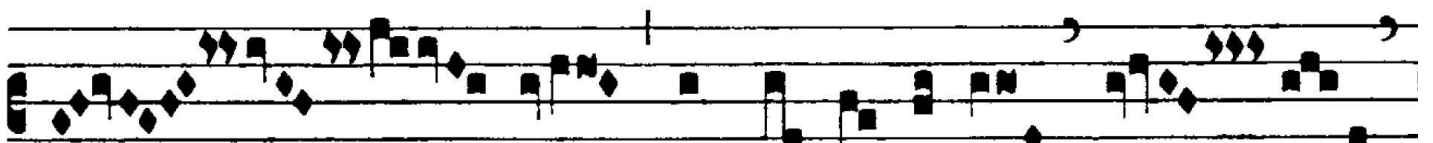
L-le- lú- ia.



Te de-cet hymnus, De- us, in



Si- on : et ti- bi red- dé- tur



vo- tum in Ie- rú- sa- lem.





A musical staff with five lines. The first few notes are black squares with stems, some with flags. Below the staff, there is red handwritten text: "» i. 4/4".



ANT. AD OFFERTORIUM

OF. II

A

com ✓ *N* " *ñ* - *!:* *π* *π* *u* / *ñ* " *!:* *π*
D te Dómi- ne le- vá- vi á-

- *N* *S* - // *N* *π* *P* / *P* *!:* *π*
nimam me- am : De- us me- us, in te confí- do,

✓ - *N* *S* - // *π* " / *u* *!:* *S* / - /
non e-ru- bé-scám : ne-que ir- rí-de- ant me in-i-

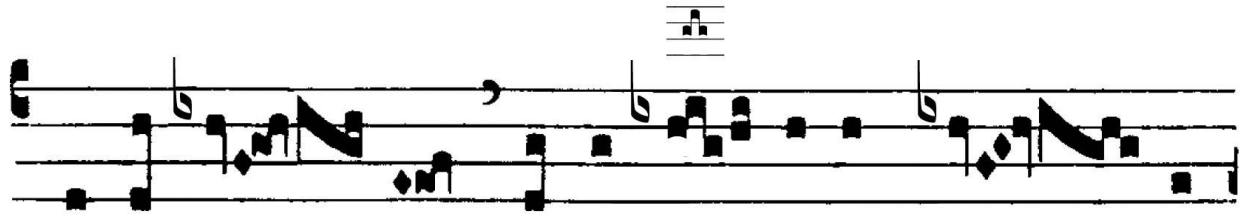
π / *π* *!:* *π* *ñ* *N* *P* *N* / *S* *4* *ñ* / -
mí- ci me- i : ét- e- nim u- ni- vér- si qui te ex-

N *π* *π* *S* *4* *u* *π* *!:* *π* ✓ / *N* *N* *P*
spé- ctant, non confun- dén- tur. *∇.1.* Dí- ri- ge me in



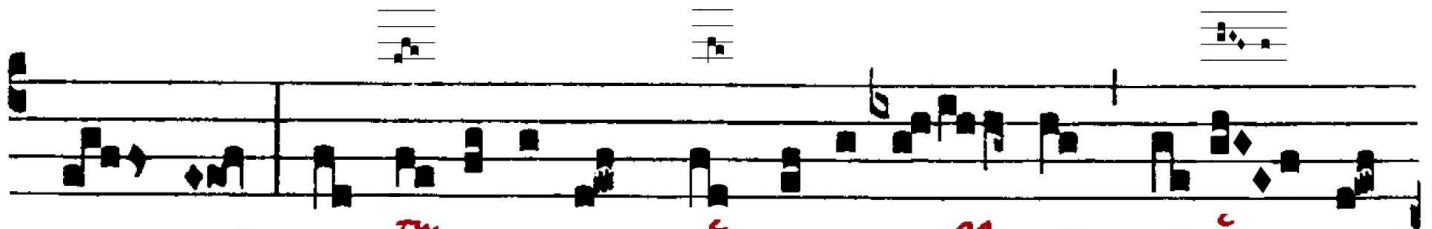
ANT. AD COMMUNIONEM

CO. IV

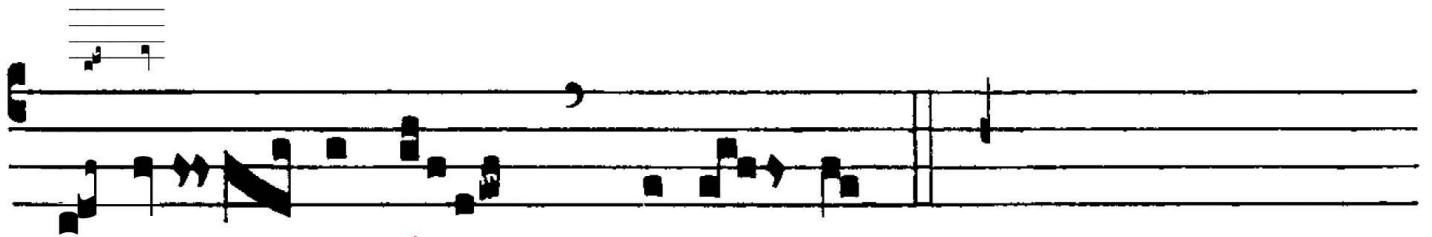


A

C-ce-ptá- bis sacri- fí- ci- um iu- stí-



ti- ae, * ob-la- ti- ó-nes et ho-lo-cáu- sta, su- per



al-tá- re tuum, Dómi- ne.