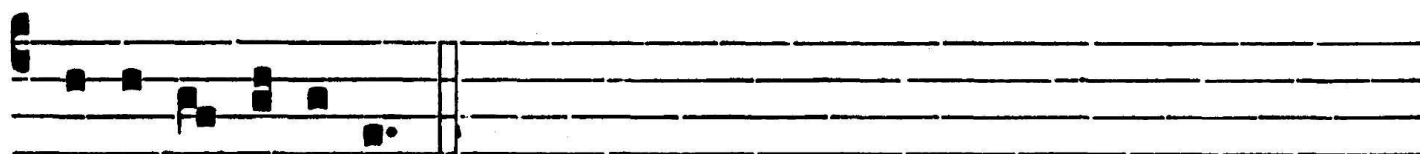


á-ni-ma me- a in á-tri- a Dó-mi-ni. Gló- ri- a Pa-tri.



E u o u a e.



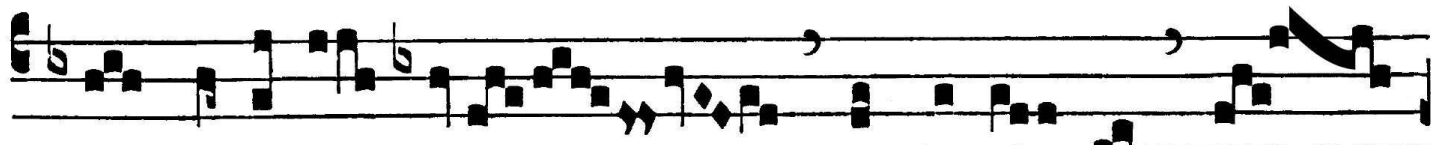
GRADUALE

GR. V

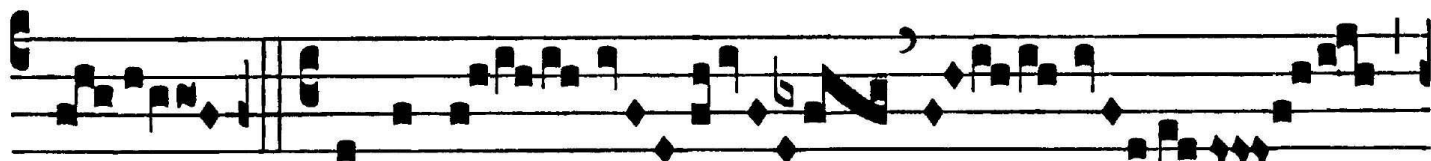


B

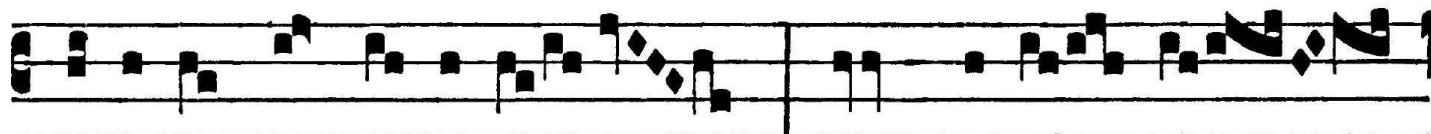
Handwritten red musical notation
O-num est confi-de-re in Dó-mi-no,



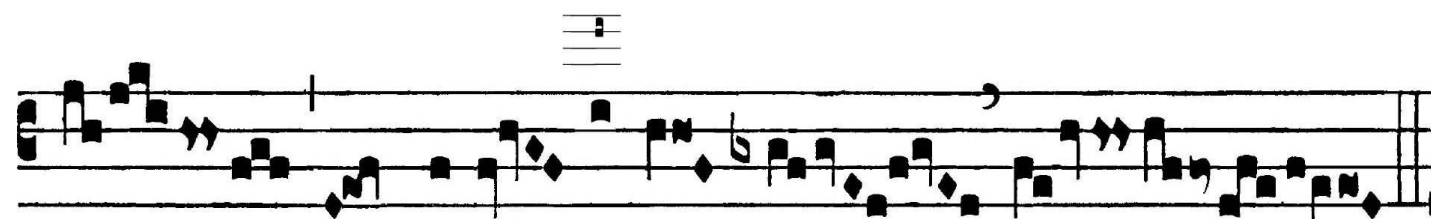
Handwritten red musical notation
quam confi-de-re in hó-mi-ne.



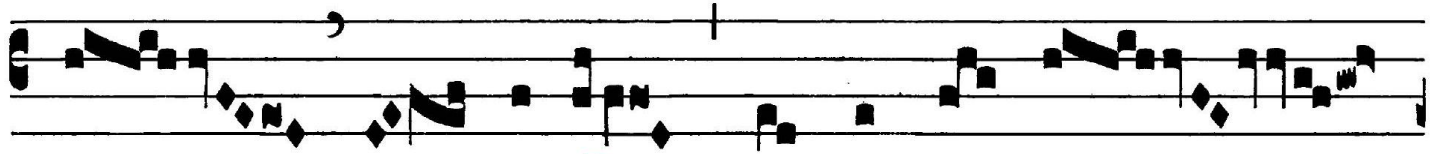
Handwritten red musical notation
Bonum est



Handwritten red musical notation
spe-rá-re in Dó-mi-no, quam spe-rá-



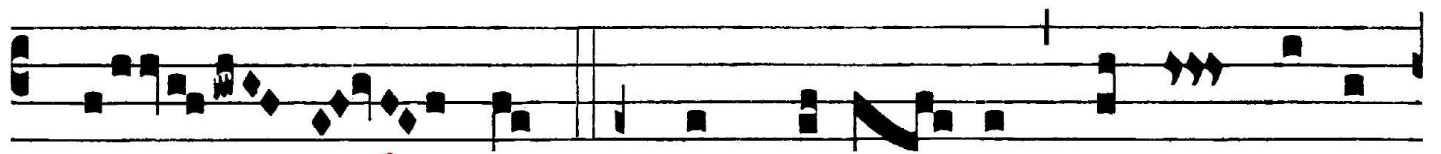
Handwritten red musical notation
re in princí-pi-bus.



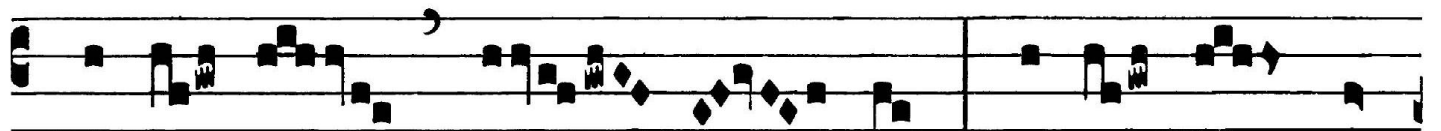
M. f cam *N* Dó- *f* mi-num *f* in *f* omni *M. f* tén-



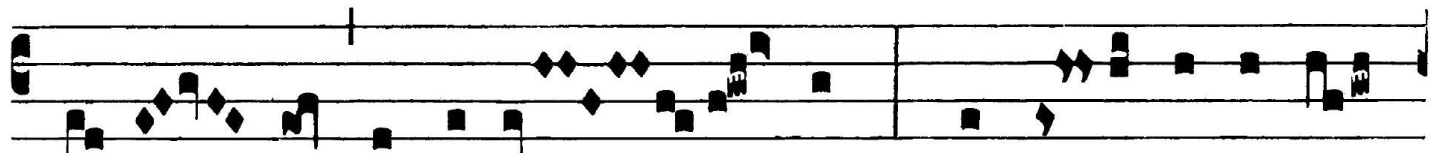
f po- re : *f* semper *M. f* laus *f* e- *f* ius *M. f* in o-



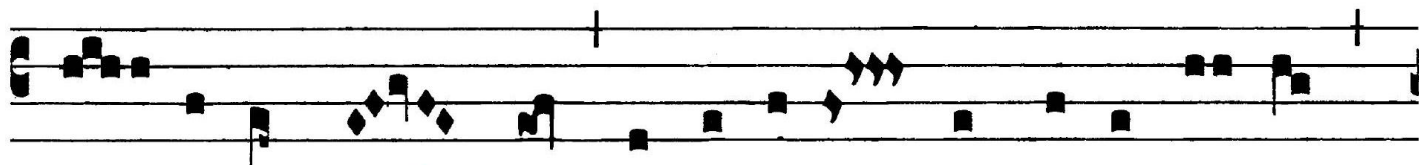
f re *M. f* me- *f* o. *M. f* 2. In *f* Dómi- *f* no *f* laudá- *f* bi- tur



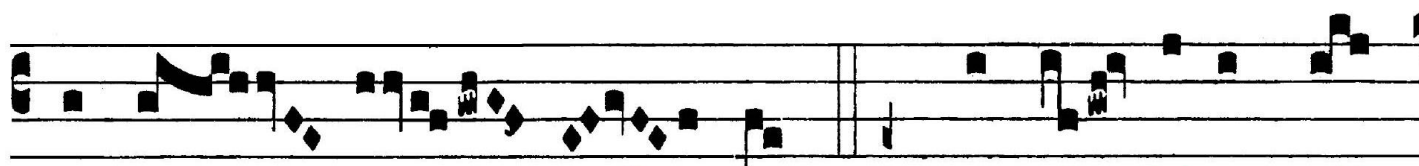
f á- ni- ma *f* me- *f* a : *f* áudi- *f* ant man-



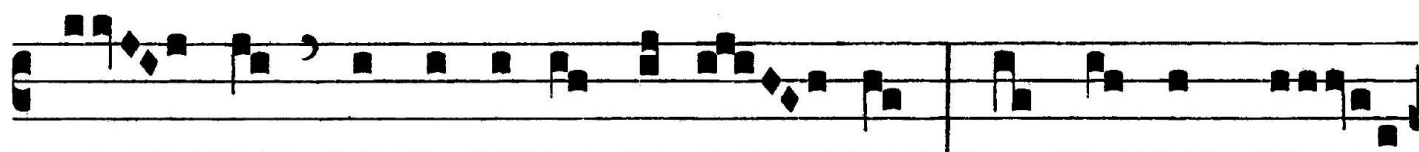
f su- *f* é- *f* ti *f* et laetén- *f* tur : *f* magni- *f* fi- cá- te



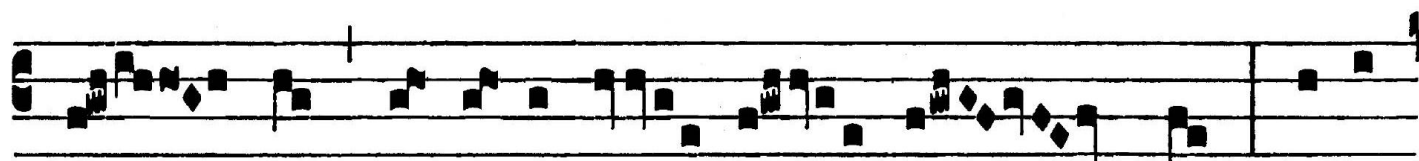
Handwritten musical notation in red ink above the text.
 Dó- mi-num me- cum et ex-alté- mus nomen e- ius



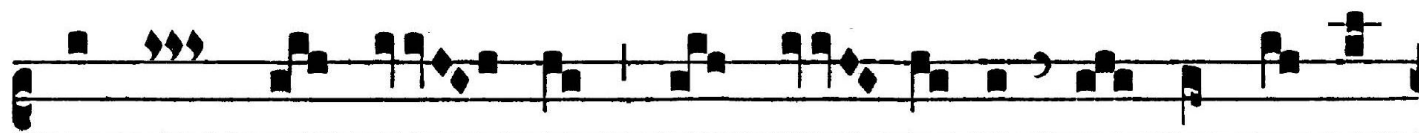
Handwritten musical notation in red ink above the text.
 in ín- vi- cem. *V. 3.* Accé- di-te ad



Handwritten musical notation in red ink above the text.
 e- um et il-lumi- námi- ni et vul-tus ve-



Handwritten musical notation in red ink above the text.
 stri non e-ru-bé- scent. Iste



Handwritten musical notation in red ink above the text.
 pauper cla- má- vit et Dó- mi-nus ex- au-dí- vit



ANT. AD COMMUNIONEM



CO. VIII

P

N - / N - P U - . - / N N -
Ri-mum quaéri- te regnum De- i, * et ómni- a



- / / / U - N - N N / / S -
adi-ci- éntur vo- bis, di- cit Dómi- nus.



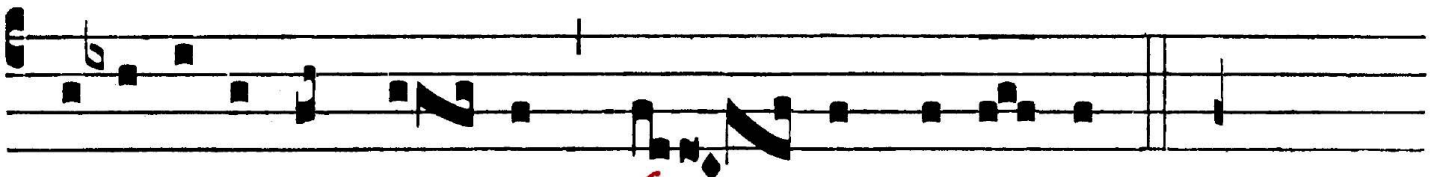
ANT. AD COMMUNIONEM - RESTITUTA

CO. VI



P

N - / N - P U - / - / N N -
Ri-mum quaéri- te regnum De- i, * et ómni- a



- / / / U - N - N N / / S -
adi-ci- éntur vo- bis, di- cit Dómi- nus.