



ANTIPHONA AD INTROITUM

M I-se-ré-re mi-hi Dó-mi-ne, quó-ni-am ad te
clamá-vi to-ta di-e : qui-a tu Dómi-
ne su-á-vis ac mi-tis es, et co-pi-ó-sus in
mi-se-ri-cór-di-a ó-mni-bus invo-cánti-
bus te. *Ps.* Inclí-na Dómi-ne aurem tu-am et exáudi me :



A ✓ / / / / / ✓ A / -
quó-ni-am in-ops et pau-per sum ego. Gló-ri-a Patri.



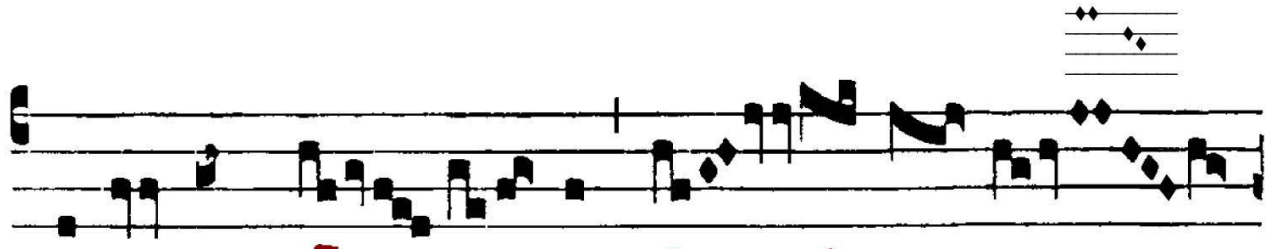
E u o u a e.



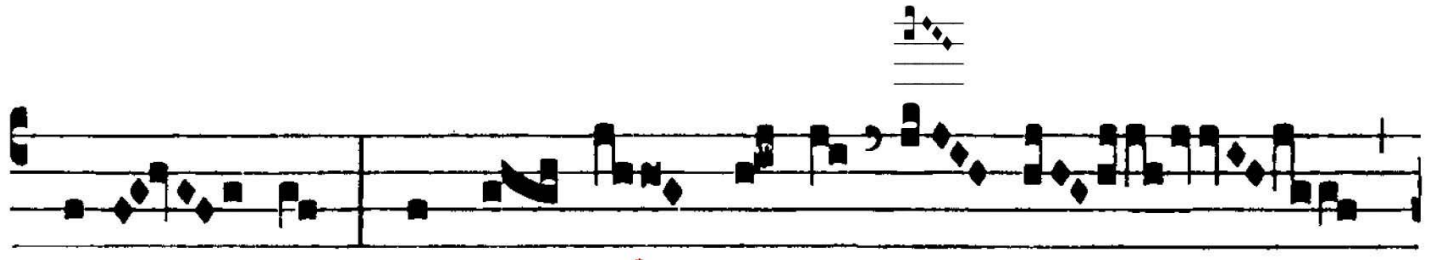
GRADUALE

GR. V

T



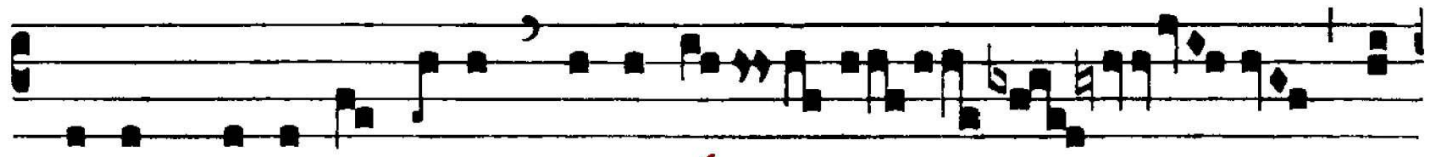
Imé- bunt gen- tes no- men tuum,



Dómi- ne, et o- mnes re- ges ter- rae



gló- ri- am tu- am. Quó-



ni- am aedi- fi- cávit Dómi- nus Si-

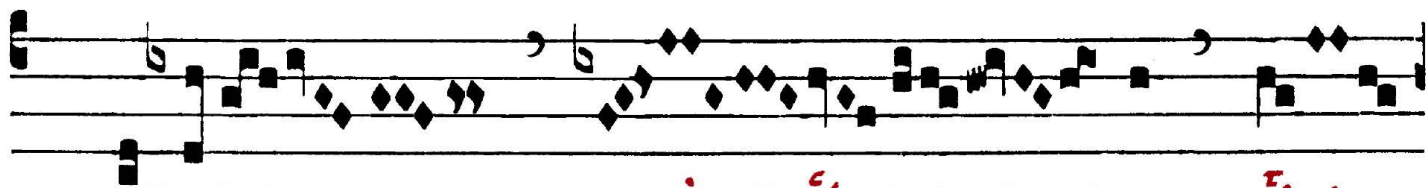


Alleluia

I

A

L-le- lú- ia.



V. Cantá-

te Dó-



mi-no cán- ti- cum no- vum : qui-



a mi-ra- bí- li- a fe- cit



* Dó-mi- nus.



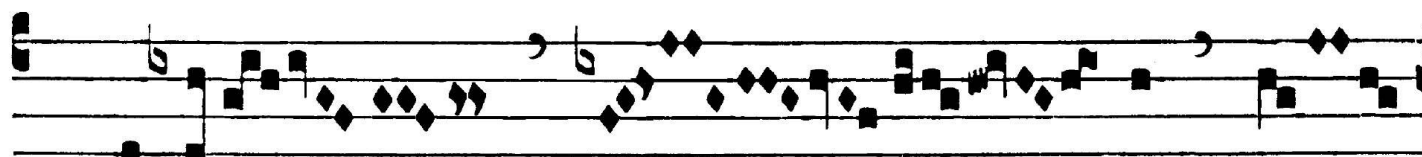
ALLELUIA RESTITUTUS

I

A



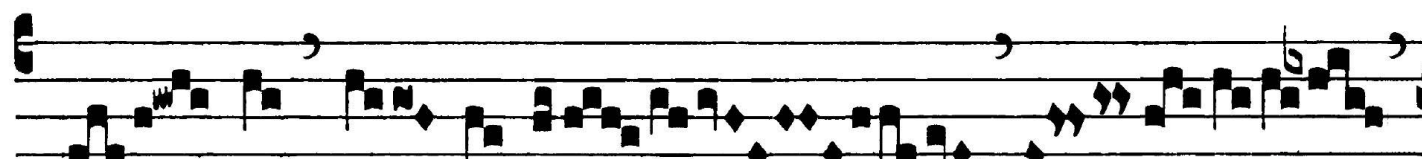
L-le- lú- ia.



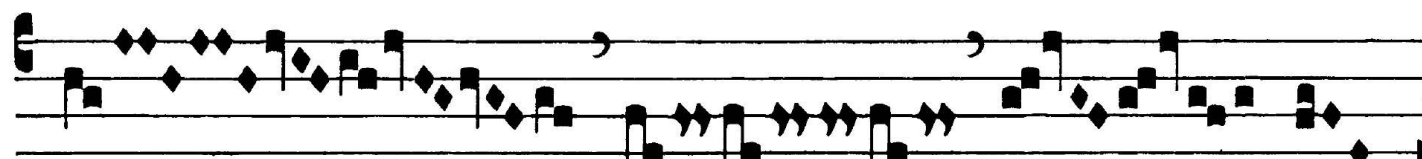
V. Cantá- te Dó-



mi-no cán- ti- cum no- vum :



qui- a mi- ra-bí-



li-



a
fe- cit Dó- mi-nus.



ANT. AD OFFERTORIUM

OF. VI

D

Omi- ne, in auxí- li- um me- um réspi- ce :

con- fundántur et reve-re- án- tur, qui quae- runt á- ni-

mam me- am, ut áu- fe- rant e- am :

Dó- mi- ne, in auxí- li- um me- um réspi- ce :

V. 1. Avertán- tur retrór-



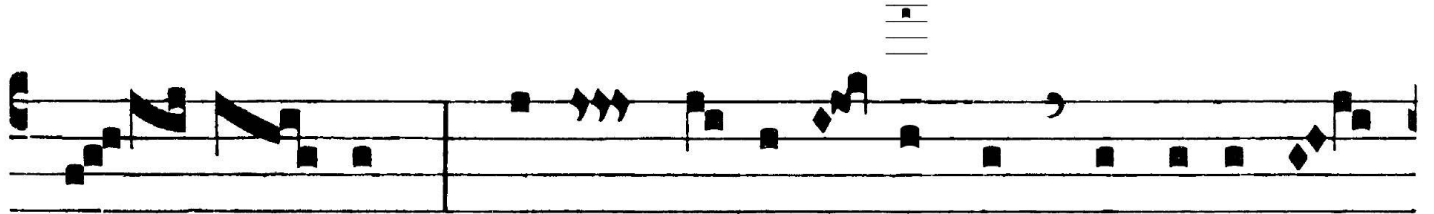
ANT. AD COMMUNIONEM

CO. VIII

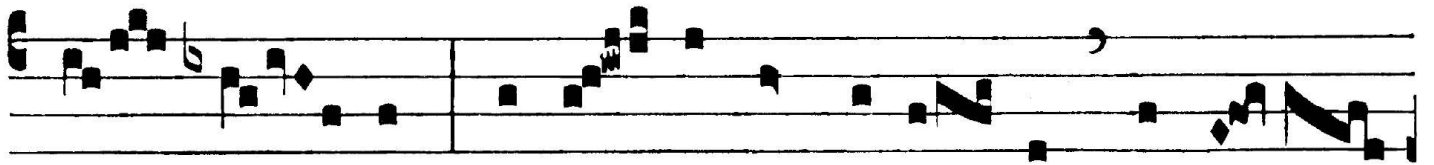
D



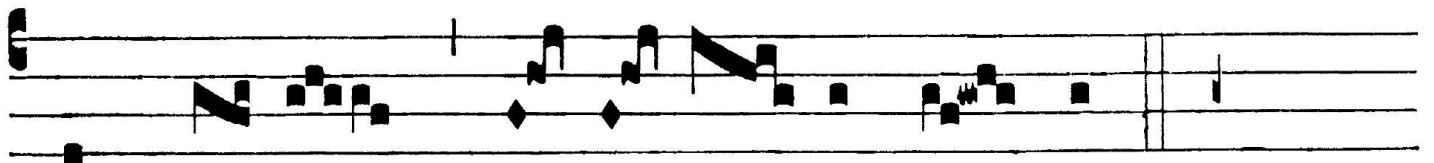
Ó-mi-ne, memo-rá- bor iustí- ti- ae tu- ae



so- lí- us: * De- us, do-cu- í- sti me a iuventú-



te me- a, ** et us-que in se-né- ctam et sé- ni-



um, De- us, ne de- re- lín- quas me.