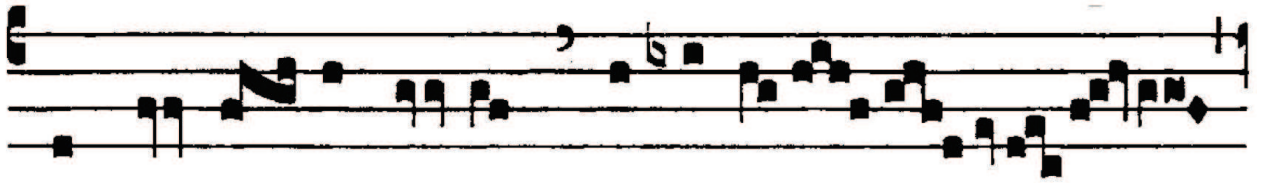




GRADUALE

GR. V



C

Onstí- tu- es e- os prín-ci-pes



su- per omnem ter- ram : mé- mo- res



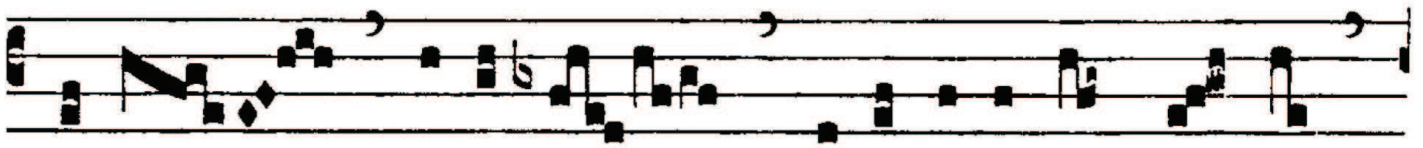
e- runt nó- mi- nis tu- i, Dó- mi- ne.



Pro pá- tri- bus tu-



is na- ti sunt ti- bi fí- li- i : pro-



✓ *AN* *em* / ✓ *AN* - ✓ / / *AN* *em* *A*
ptér-e- a pópu- li confi- tebúntur ti- bi.



N. *AN* *A*